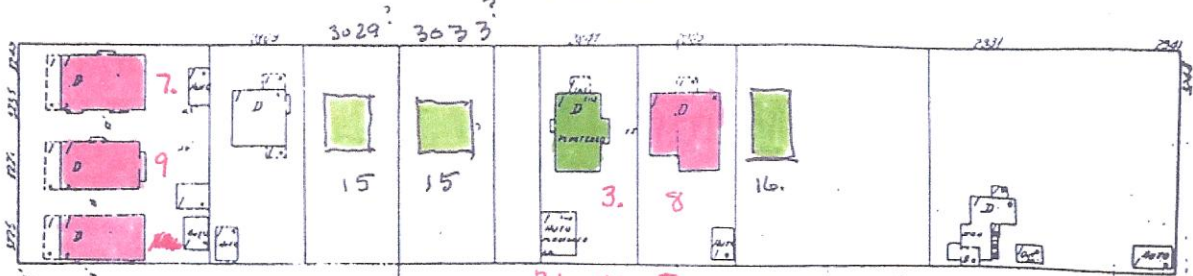


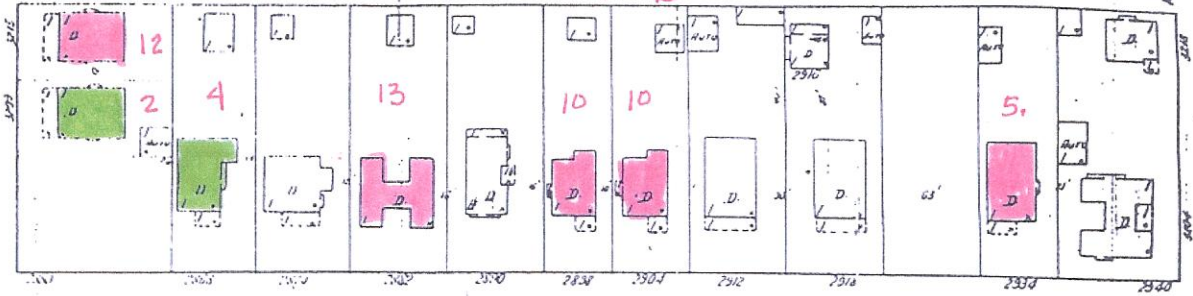
2886 Redwood

- 1. D. Andrew \$3500 Jan 7, 1914
- 2. <sup>3165</sup><sub>3209</sub> Granada, L-1-3, B-B WALLACE HTS. O.L. CALLOWAY \$2000 Nov 11, 1913
- 3. ~~2847~~ Thorn, L 36+37, B-B " O.B. PALMER / O NELSON \$2000 May 22, 1914
- 4. <sup>3408</sup><sub>2847</sub> Spruce, L 3+4 B-B " HEILMAN + FESSENDEN, Oct 28, 1912, \$2000
- 5. <sup>3486</sup><sub>2934</sub> Spruce, L-21+22, BL-B " J.A. HEILMAN, April 4, 1912, \$2000
- 6. 2923 Spruce, L-31, B-A " CHARLES GERHARD, April 6, 1912 \$1500
- 7. 3235 Granada, L 45-48, B-B " E.W. NEWMAN / P.R. BARRINGTON \$2000 4/9/12
- 8. 29<sup>M</sup> + Dale on Thorn, L 34 + 35, B-B " BRADNER + HUNTER / L.E. HAMMOND 4/16/12 \$2400
- 9. 3227 Granada, L 46-48, B-B " E.W. NEWMAN / P.R. PENNINGTON 5/8/12 \$1800
- 10. <sup>2898</sup><sub>2904</sub> Spruce, L 12+13, B-B " E.R. WATSON / EMIL POLLACK 2 Cottages 1200 @ 6/27/12
- 11. <sup>2914</sup> Redwood, L 15+16, BL B<sup>A?</sup> " OSCAR KRECHMEYER / A.M. MCCORRICK \$2000, 7/2/12
- 12. <sup>3173</sup><sub>3215</sub> Granada L1-3, BL B " O.L. CALLOWAY / WALTER S. WHEELER \$2000 4/25/13
- 13. <sup>3434</sup><sub>2892</sub> Spruce L 8+9, BL B " HEILMAN Bros. \$2000 5/13/13
- 14. <sup>2879</sup><sub>2897</sub> Spruce L 38+39, BL A " H.H. GRAINGER \$1250 Fr. Bungalow 9/24/14
- 15. 3029-33 Thorn St. - A.O. WALLACE Addition BL-B(8)?, L-N?, 2 Fr. lots + gars, @ \$2000, D.E. TAYLOR
- 16. 2911 Thorn, L-32+33, BL-B, WALLACE, Fr. Cot + GAR, FRANK KIEHLE \$3000 N/C AUG 9, 1923

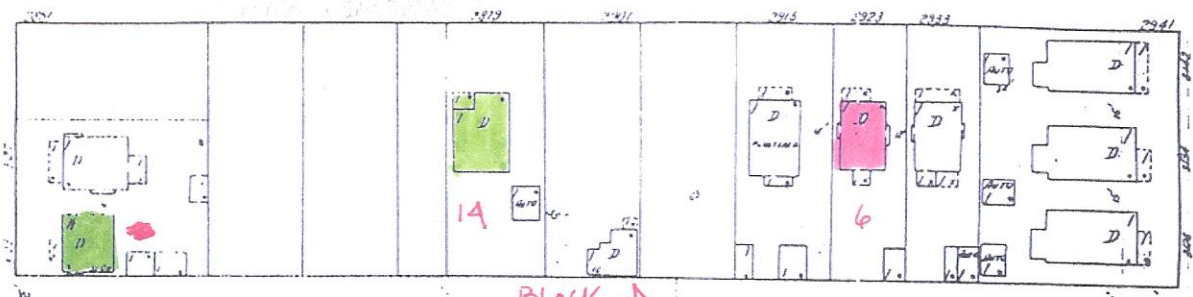
THORN



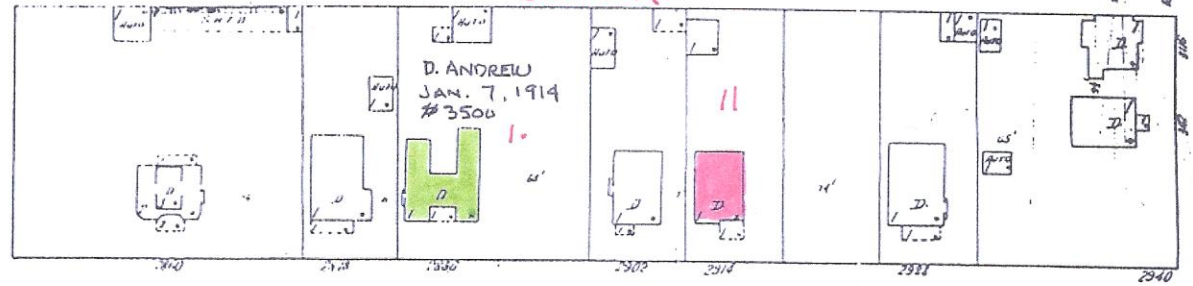
Block B



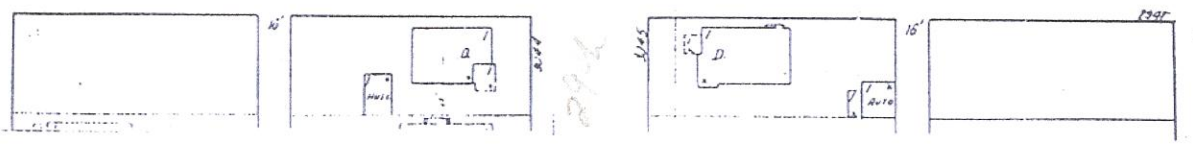
SPRUCE



Block A



REDWOOD



GRANADA

29th STREET

*Dale*

WALLACE HEIGHTS

\* 3119 DALE WALLACE (BL-8, L-S ?) B/P L. HENDERSON / C. H. TIFAL, Bungalow + GAR, #6000. April 12, 1923