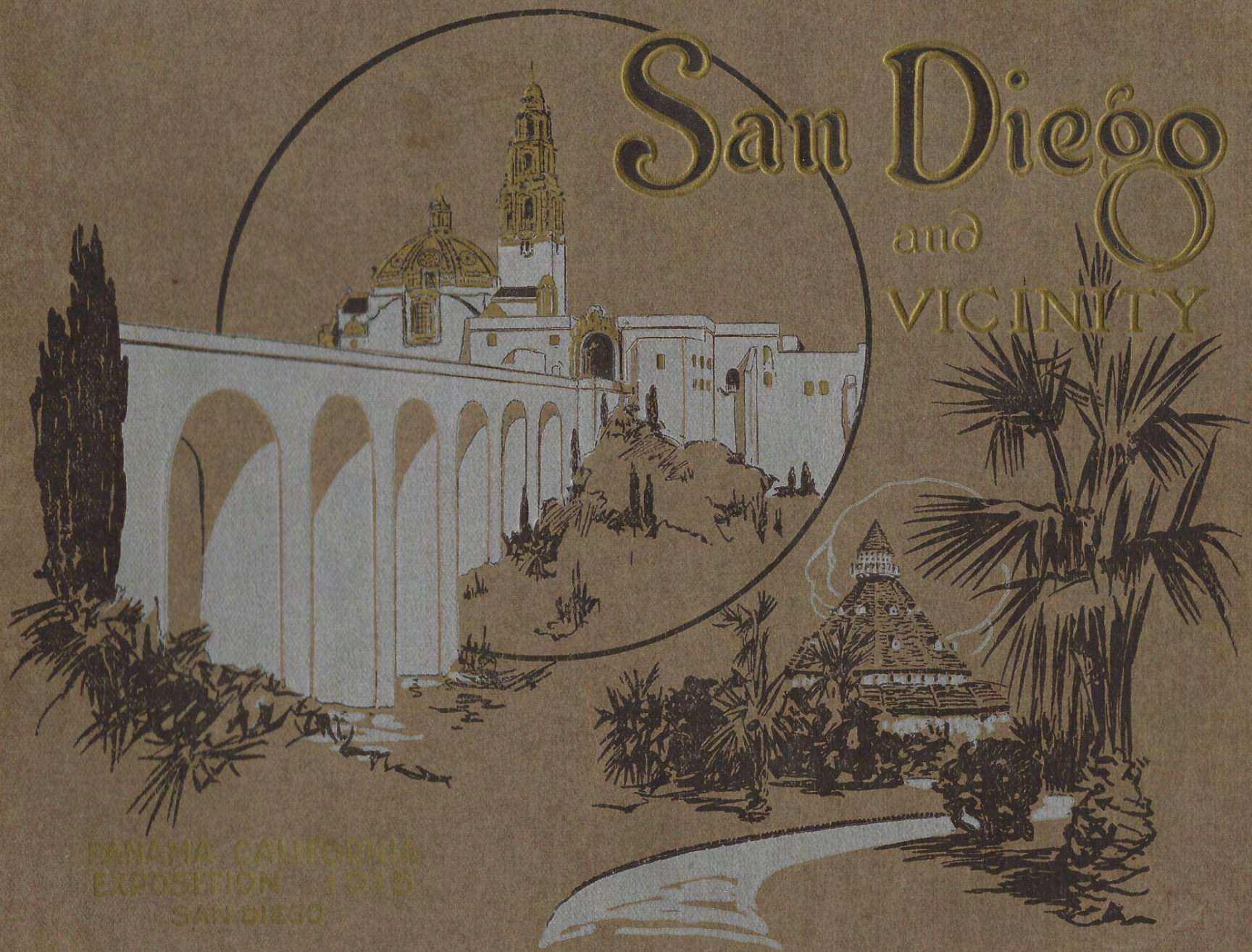


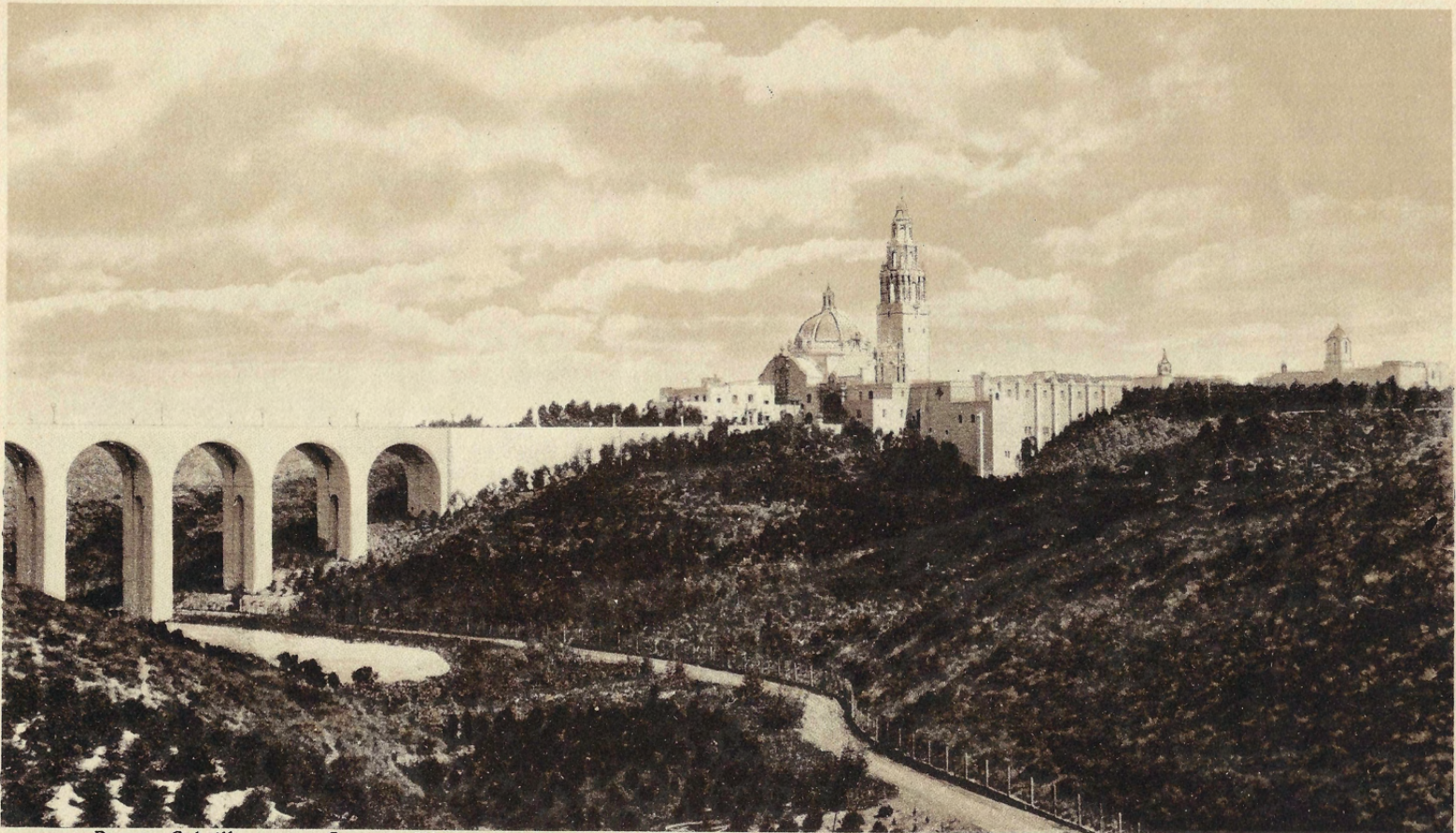
# San Diego

and  
VICINITY



PANAMA CALIFORNIA  
EXPOSITION 1915  
SAN DIEGO

# SAN DIEGO AND VICINITY CALIFORNIA.



Puente Cabrillo across Canyon, West approach to the Panama-California Exposition, San Diego, Cal., Jan. 1st-Dec. 31st, 1915.

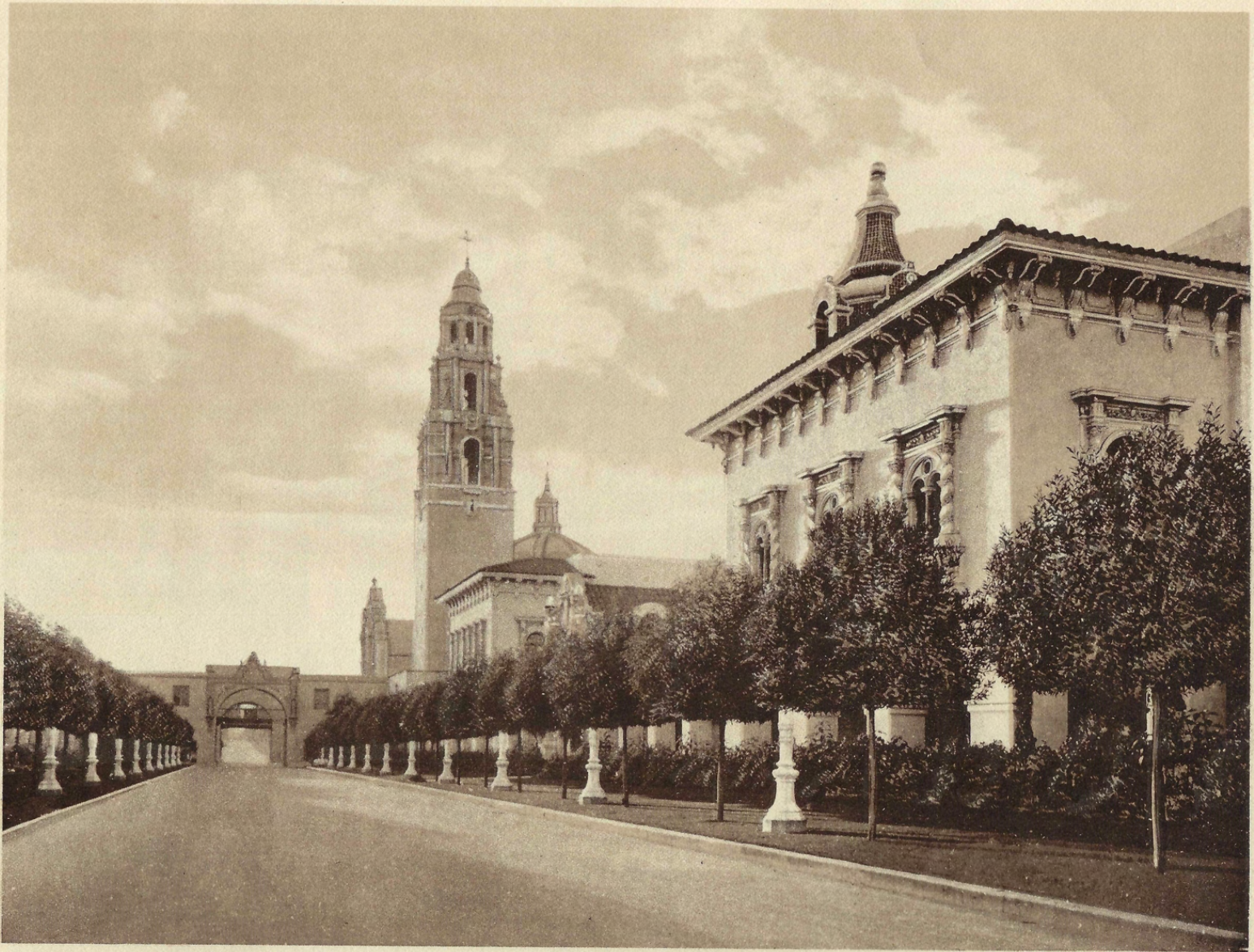
San Diego is the oldest city in California, and one of the most progressive. Cabrillo sailed into the Harbor in 1542. In 1769 Father Junipero Serra founded the first of the twenty-three California Missions. Mission "De Alcala" situated about six miles from the present city which was established as the new town in 1867. The land-locked harbor of San Diego Bay covers an area of twenty-two square miles and on the slope that rises from the water front the city of San Diego is spread out. The population is rapidly approaching 100,000. The city has broad well-lighted business streets, and as fine Public Buildings, Hotels and Private Residences as those of any eastern city twice the size. The magnificent U. S. Grant Hotel facing the Plaza was erected at a cost of nearly two million dollars, and is in the heart of the business district. Hotel Del Coronado at Coronado Beach is one of the most beautiful on the coast and is renowned the World over.

The Points of interest around the city are numerous, among the most prominent are La Jolla with its fine Surf and natural caves. Fort Rosencrans over the new boulevard. Point Loma, the old lighthouse on Ocean Beach. Tia Juana, the quaint Mexican village ten miles south of the city. Coronado Beach and Tent City. At old Town there is the Marriage Place of Ramona, the Mission Palm, the Serra Cross, and around the city there is the Mission Cliff Gardens, the Ostrich Farm and Beautiful Balboa Park, a tract of 1,400 acres and here is located the Panama-California Exposition, which will be open from January 1st to December 31st, 1915, one full year, the favorable climatic conditions making this possible.

*S. J. Wincinger*



West Gate to Panama-California Exposition showing Tower and Dome of California Building.



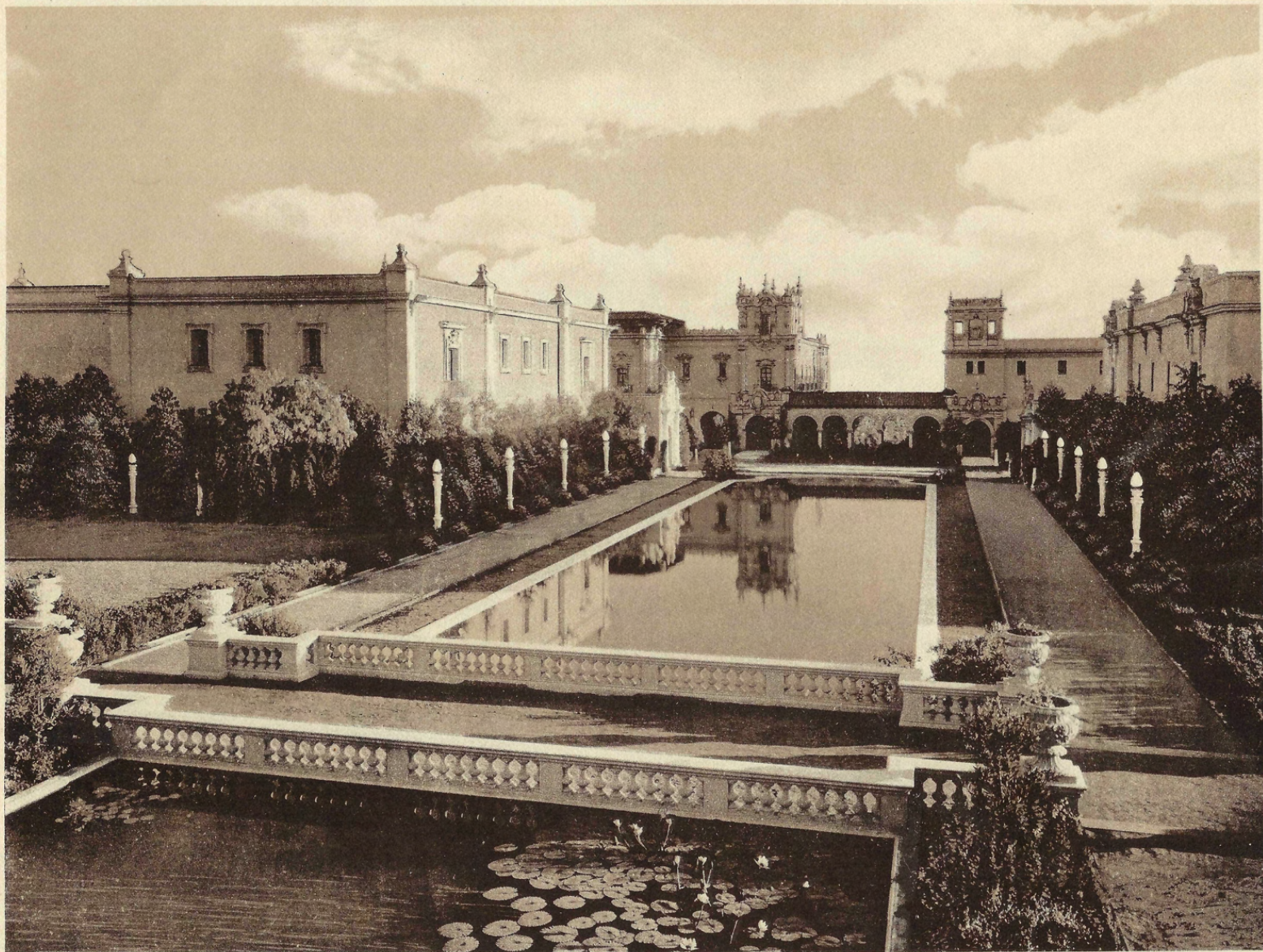
Del Prado (Main Promenade) showing West Gate and California Building, Panama-California Exposition.



Home Economy Building, Panama-California Exposition.



Botanical Building, Panama-California Exposition.



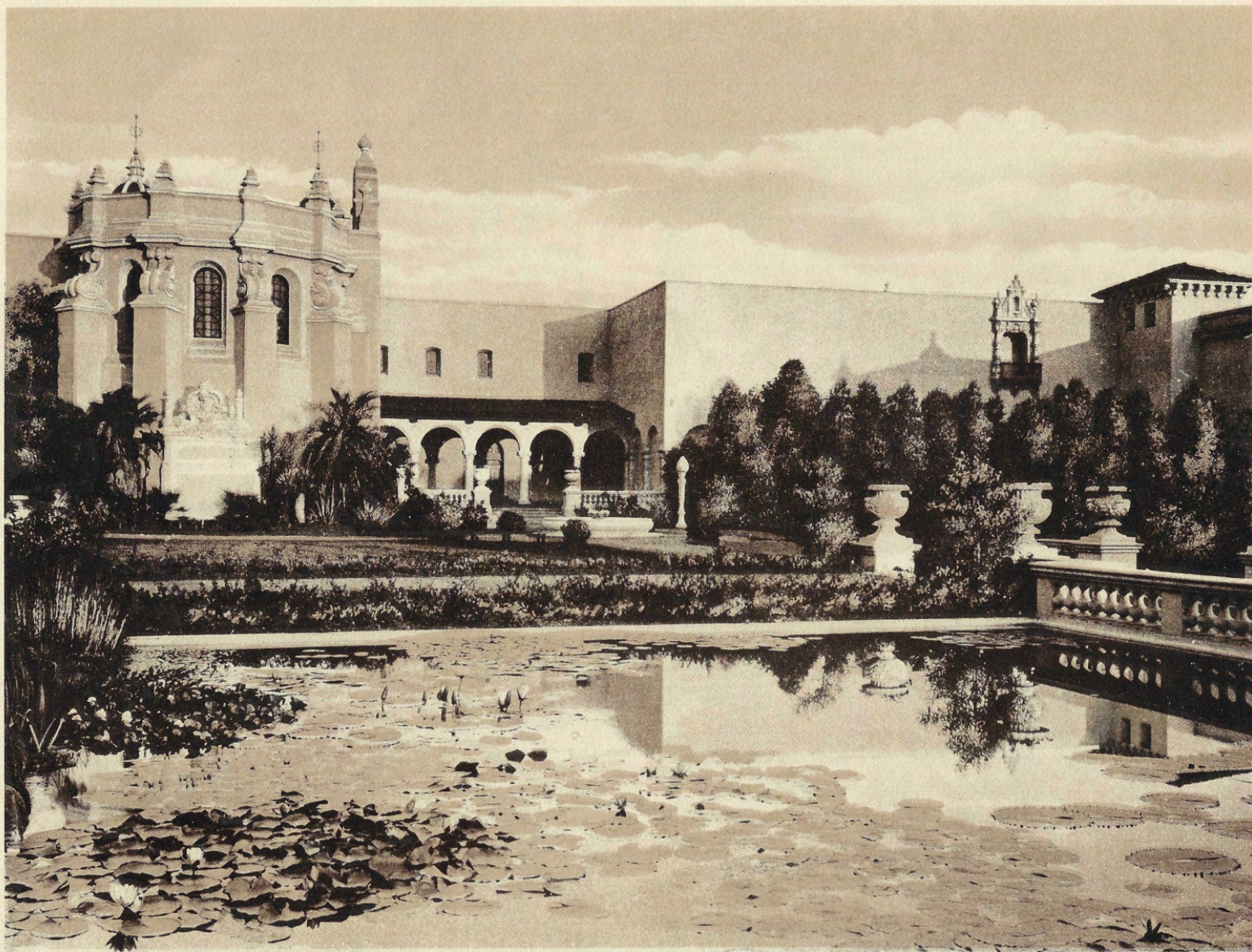
Reflections in the large Lagoon, Panama-California Exposition.



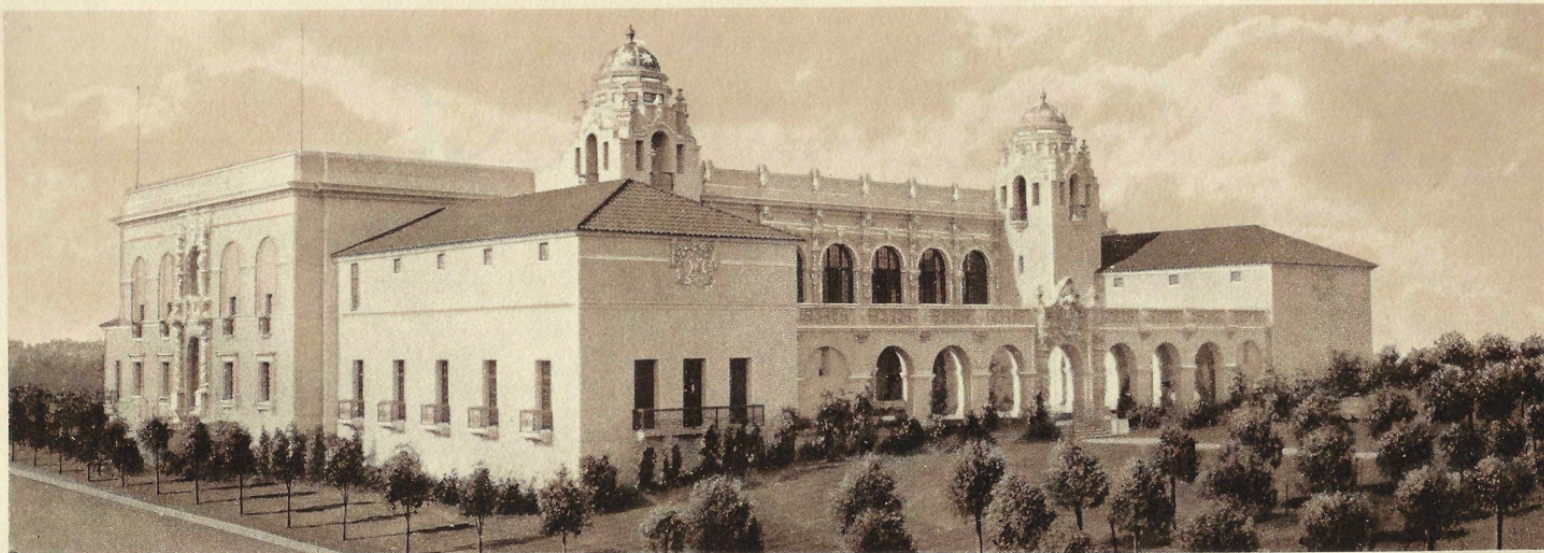
Vista of Arts and Crafts Building, Panama-California Exposition.



Tower of Science and Education Building, Panama-California Exposition.



View of Varied Industries Building across the Lily Pond, Panama-California Exposition.



Southern California Counties Building, Panama-California Exposition.



Vista through the Arches, Panama-California Exposition.



Vista of Arts and Crafts Building, Panama-California Exposition.



East Facade, Arts and Crafts Building, Panama-California Exposition.



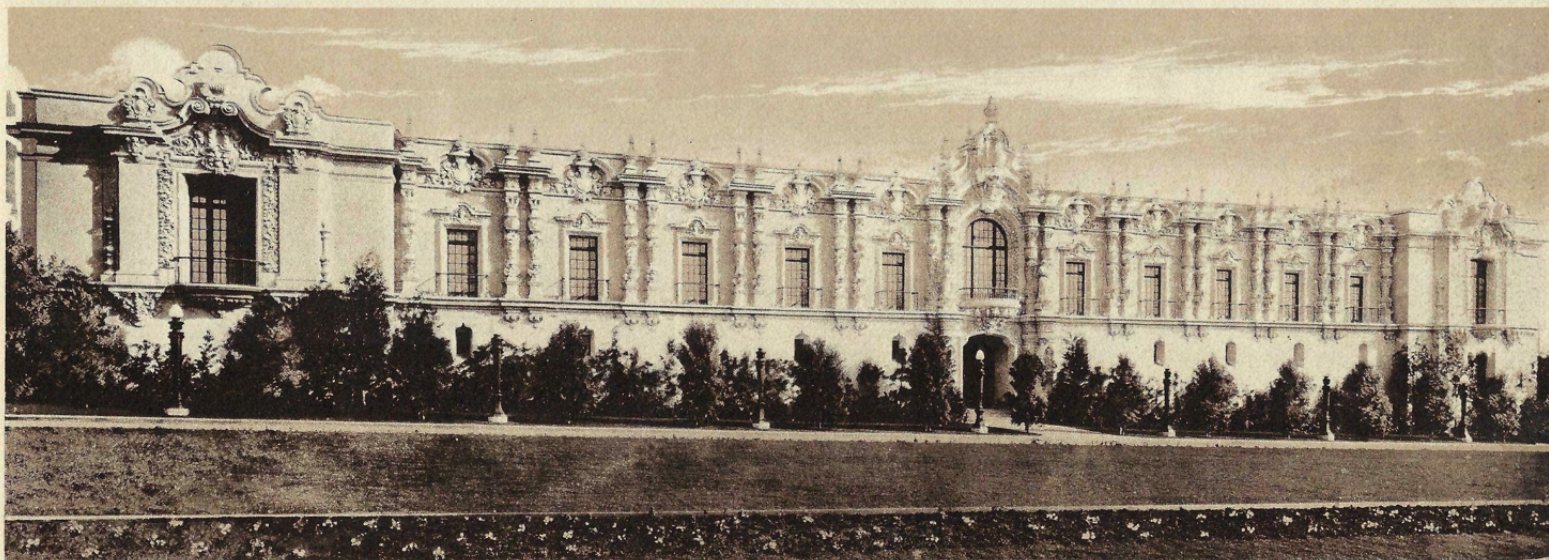
East Portal, Varied Industries Building, Panama-California Exposition.



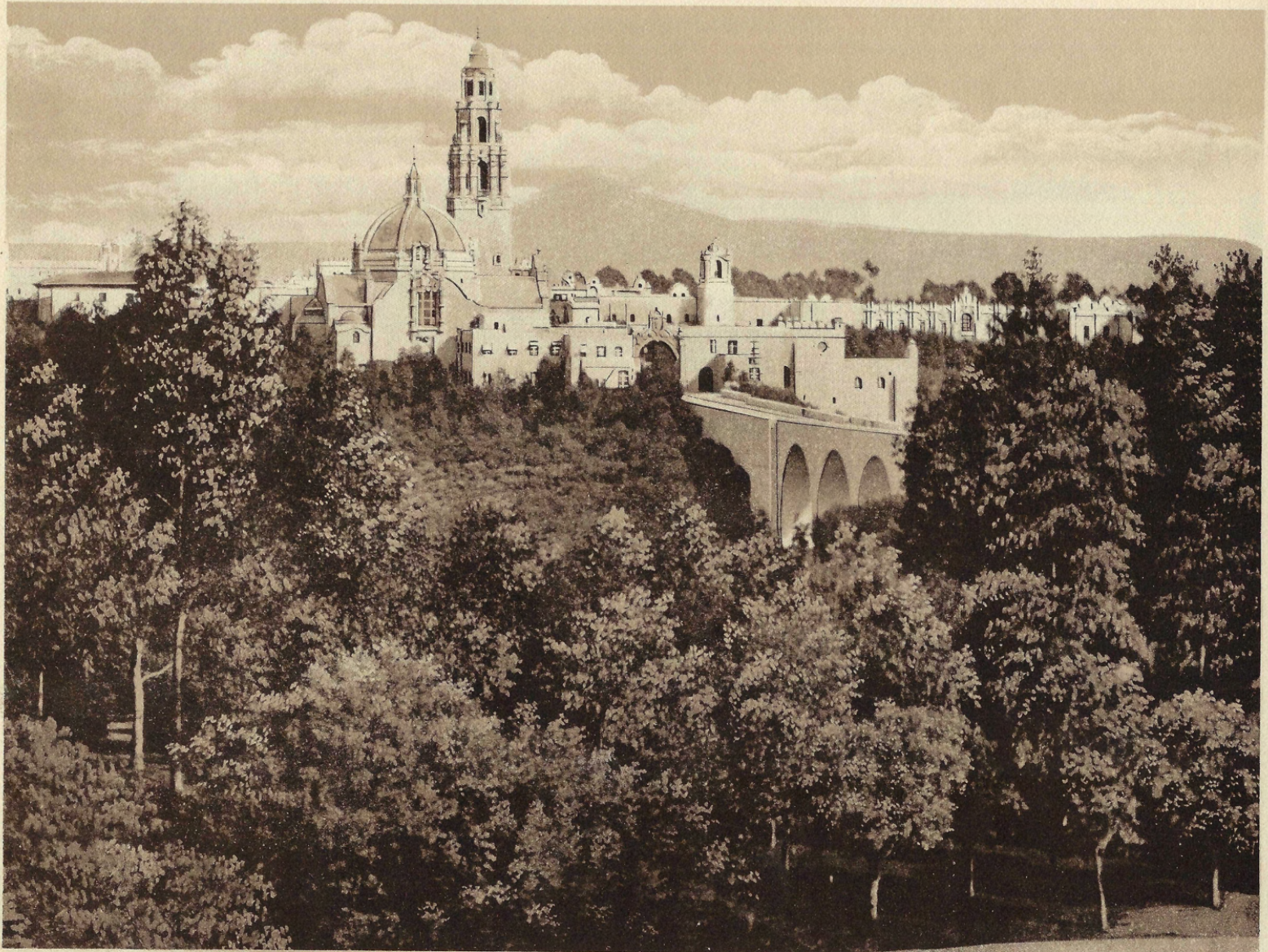
Ethnology Building and the Dome and Tower of California Building, Panama-California Exposition.



Botanical Building and Reflection in Lagoon, Panama-California Exposition.



San Joaquin Counties Building, Panama-California Exposition.



California Tower and Dome and West approach from across the Canyon, Panama-California Exposition.



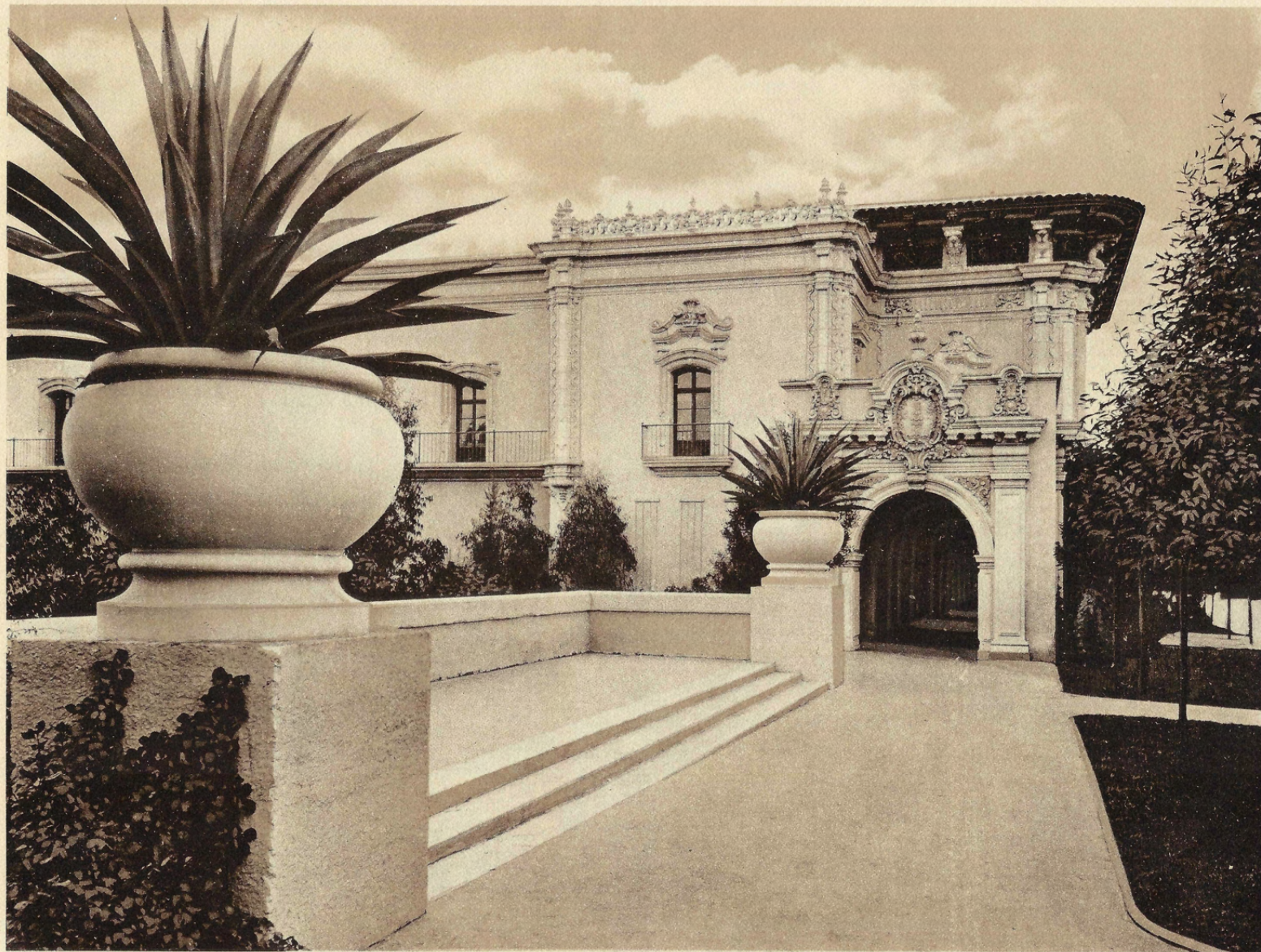
The Model Farm, Panama California Exposition.



Rear View of California Building, Panama-California Exposition.



Patio of Southern California Counties Building, Panama-California Exposition.



Vista of Commerce and Industries Building, Panama-California Exposition.



The Botanical Gardens showing Botanical Building on the left and Varied Industries Building in the Center,  
Panama-California Exposition.



Reflection of Varied Industries Building, in the large Lagoon, Panama-California Exposition.



U. S. Grant Hotel, facing Plaza Park. Constructed at a cost of \$2,000,000. Erected by U. S. Grant, Jr. as a memento to his father General U. S. Grant.



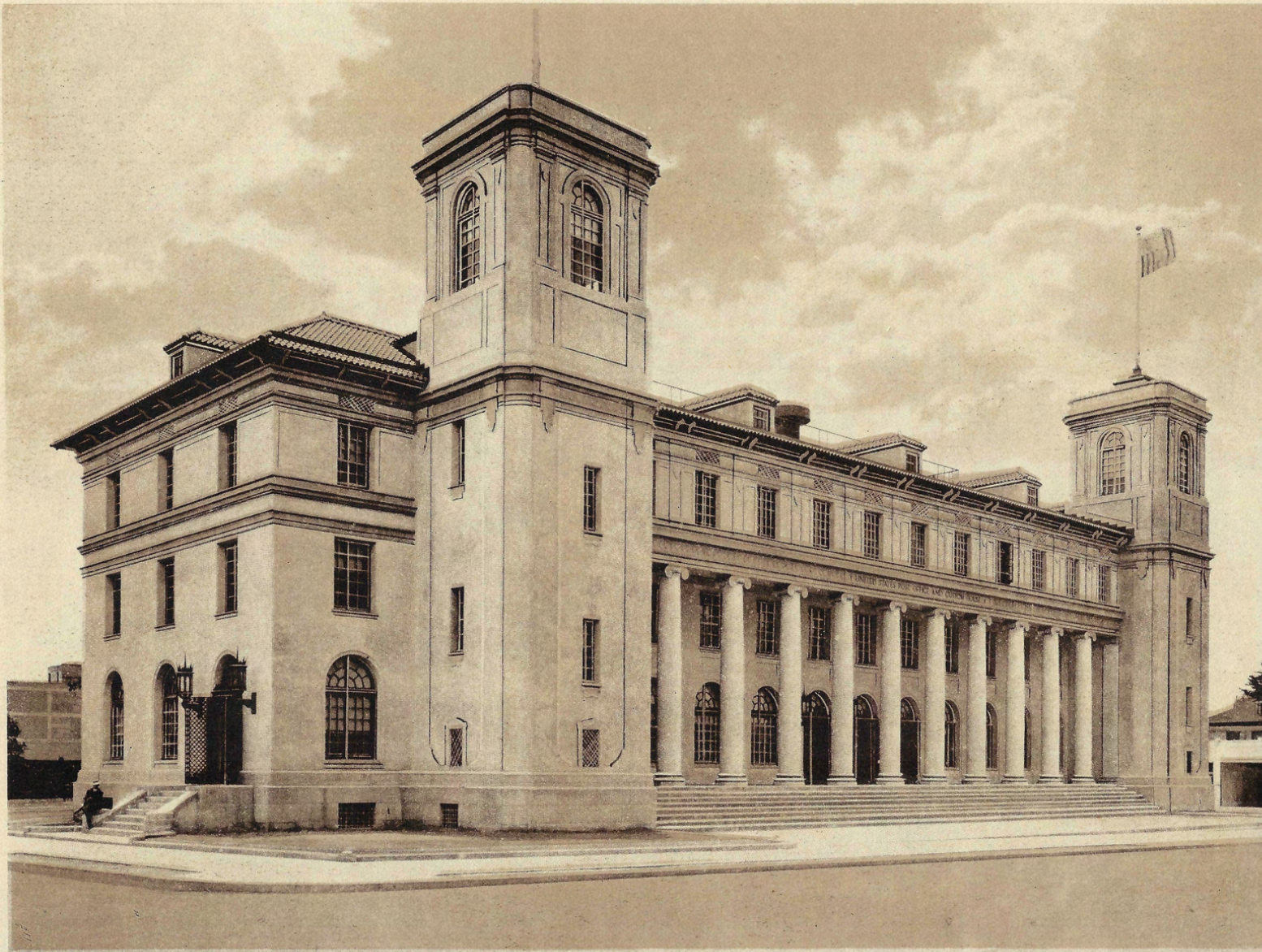
Electric Fountain in Plaza Park, facing the U. S. Grant Hotel, donated to the city by Louis J. Wilde.



Roadway through the Oaks.



Lilies in Bloom, Mission Cliff Gardens.



U. S. Post Office and Custom House. The departments of Customs and Immigration, also the Federal Court and Weather Bureau are located in this building which was recently completed at a cost of \$300,000.



Young Men's Christian Association Building.



State Normal School, situated on University Heights overlooking the city.



Indian Maids at Warner Hot Springs, near San Diego.



A Bit of Country Road, near San Diego.



Feeding Ostriches at the Ostrich Farm.



Mission San Diego "De Alcalá", 1769. First Mission in Southern California founded by Father Junipero Serra.



Mission San Juan Capistrano, 1776, situated midway between San Diego and Los Angeles.



Mission San Luis Rey, 1798, situated near Oceanside some 50 miles from San Diego.



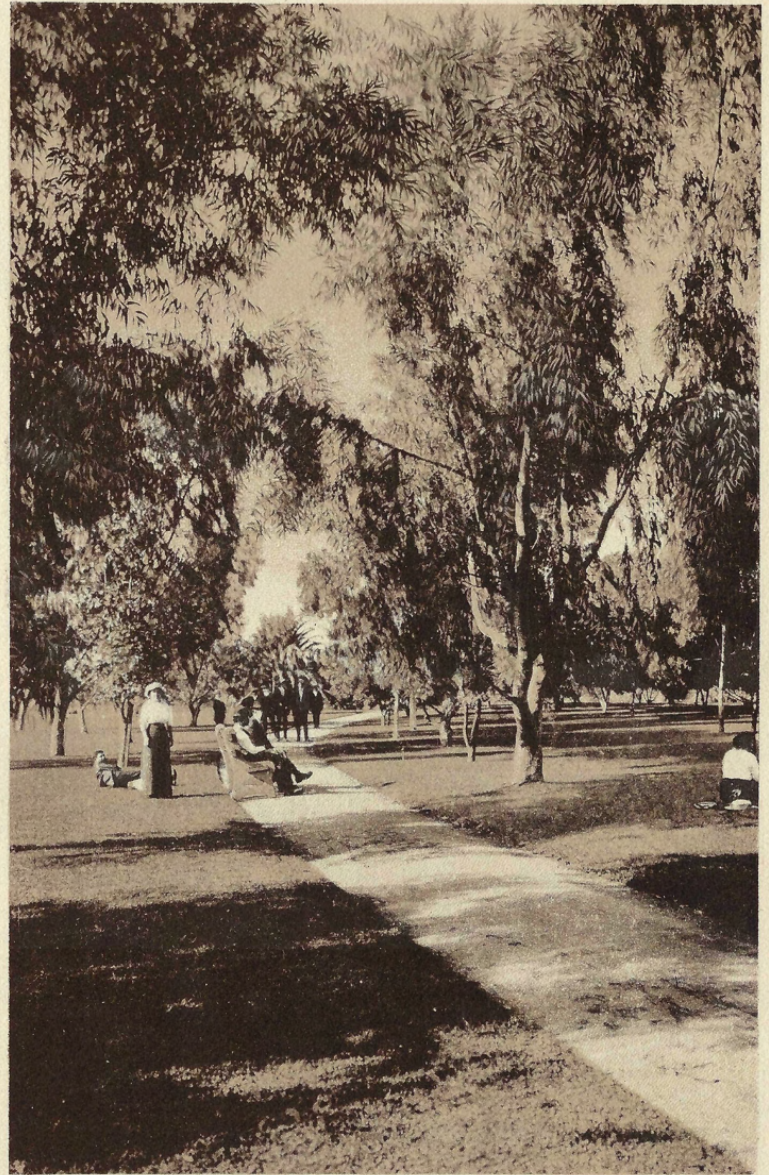
Japanese Tea Garden, Coronado.



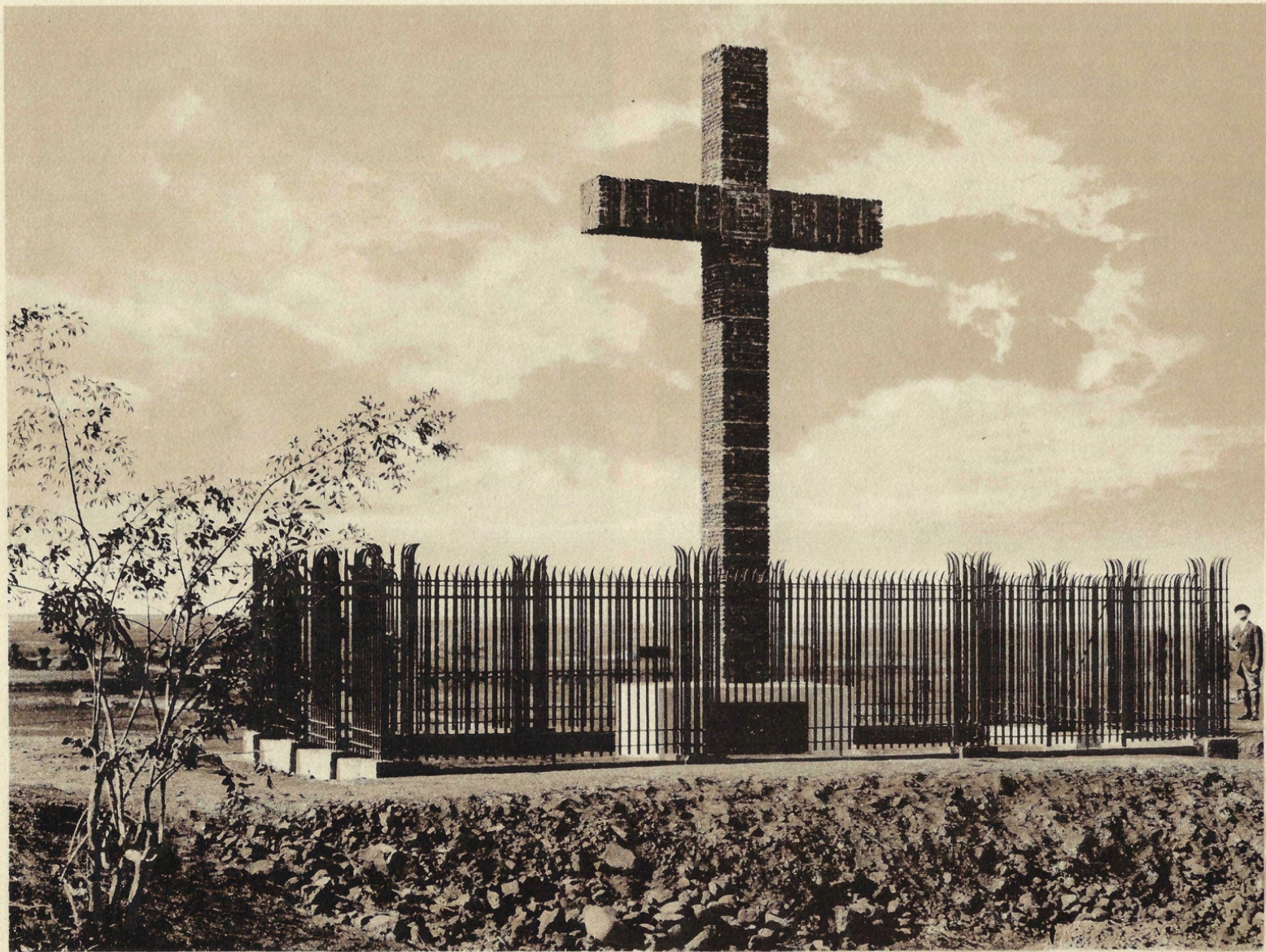
Typical Residential Street Scene showing beautiful homes among the palms and tropical foliage.



Pavilion and Fountain in Mission Cliff Gardens.



Scene in Beautiful Balboa Park.



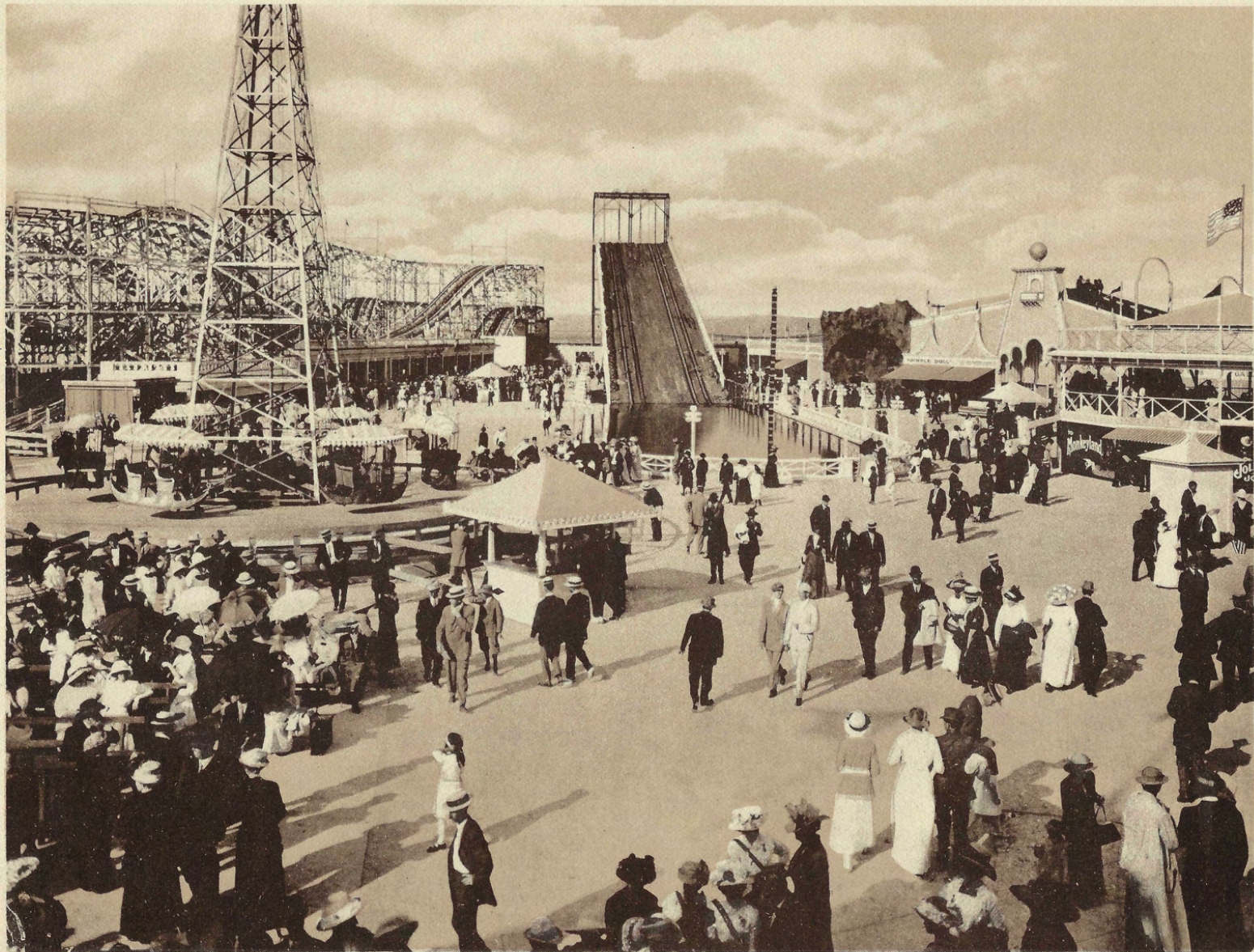
Fray Junipero Serra Monument, Old Town.



The San Diego Mission Palm, Old Town.



Torrey Pine, near San Diego. (Only known specimen in the world.)



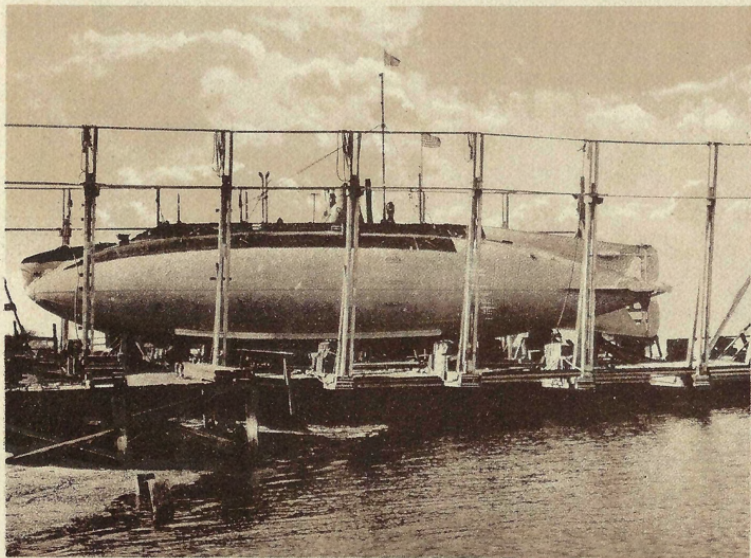
Scene in Wonderland Park.



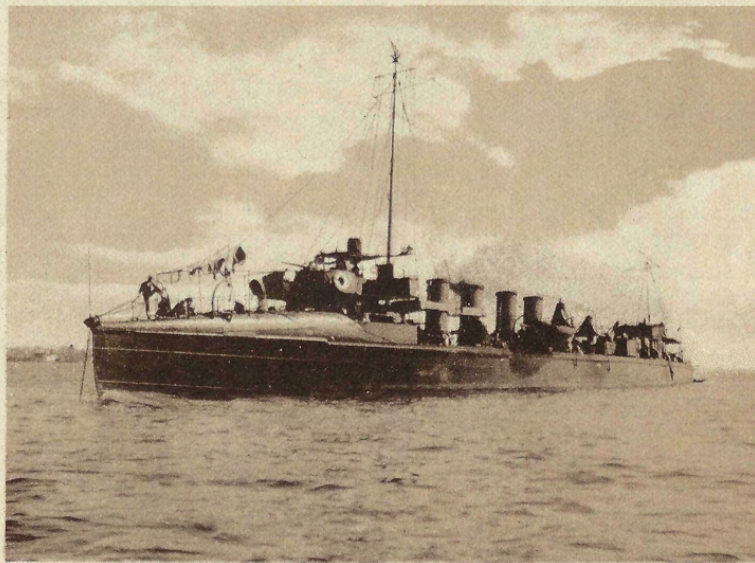
Scene at Ocean Beach, near San Diego.



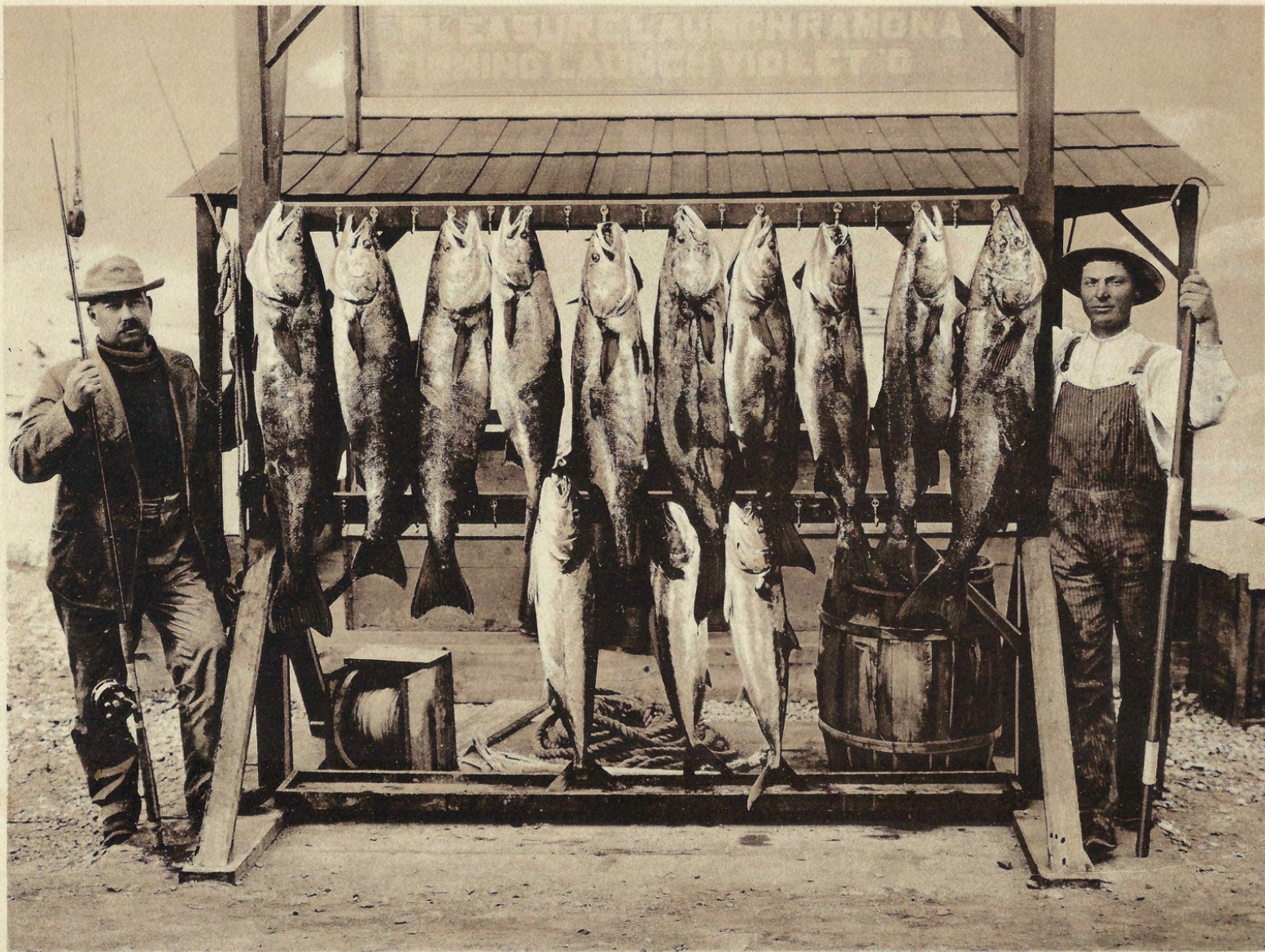
Lake Side, near San Diego.



Submarine in Dry Dock, San Diego.



Torpedo Boat St. Lawrence, San Diego Harbor.



A Days Catch off Shores.



American National Bank Building.



Hotel Del Coronado, Coronado.



Tent City, Coronado Beach.



Swimming Pool and \$30,000 Dancing Pavilion, Coronado Beach.



Boat Landing, Tent City, Coronado Beach.



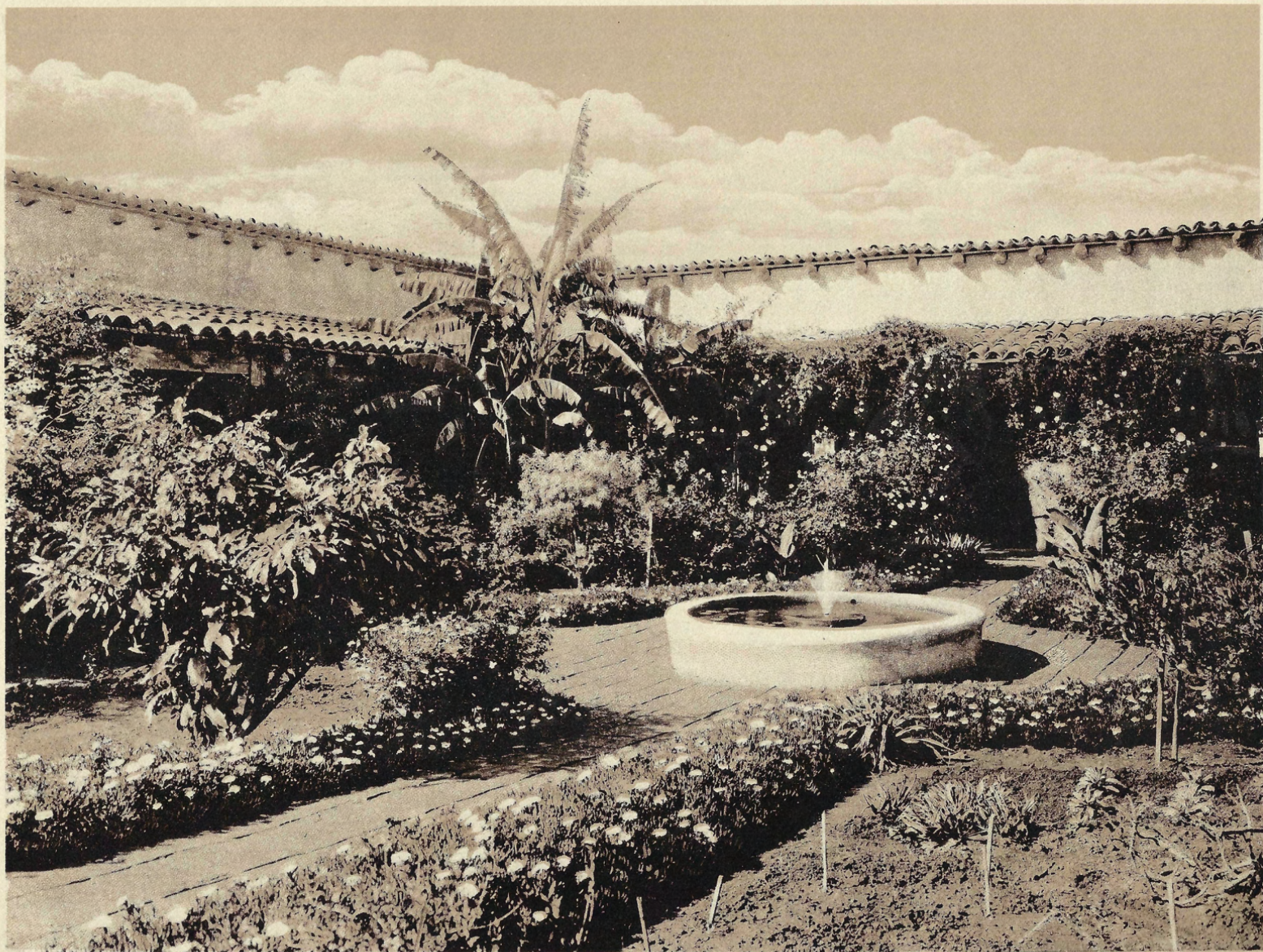
Boat Racing, Tent City, Coronado Beach.



Hotel Del Coronado, Coronado, San Diego. One of the most beautiful hotels on the coast, erected at a cost of one and one-half million dollars.



Residence of John D. Spreckels, Coronado, San Diego.



Marriage Place of Ramona at Old Town, San Diego.



Caves at La Jolla, near San Diego.



Ramona's Home, Old Town, San Diego.



Old Spanish Oven at Ramona's Marriage Place, Old Town, San Diego.



Turtle Rock, La Jolla, near San Diego.



Breakers dashing over cliffs at La Jolla, near San Diego.



Interior of Cave at La Jolla.



Yachting on the beautiful Bay of San Diego.



Surf at Coronado Beach, Point Loma in the distance, San Diego.

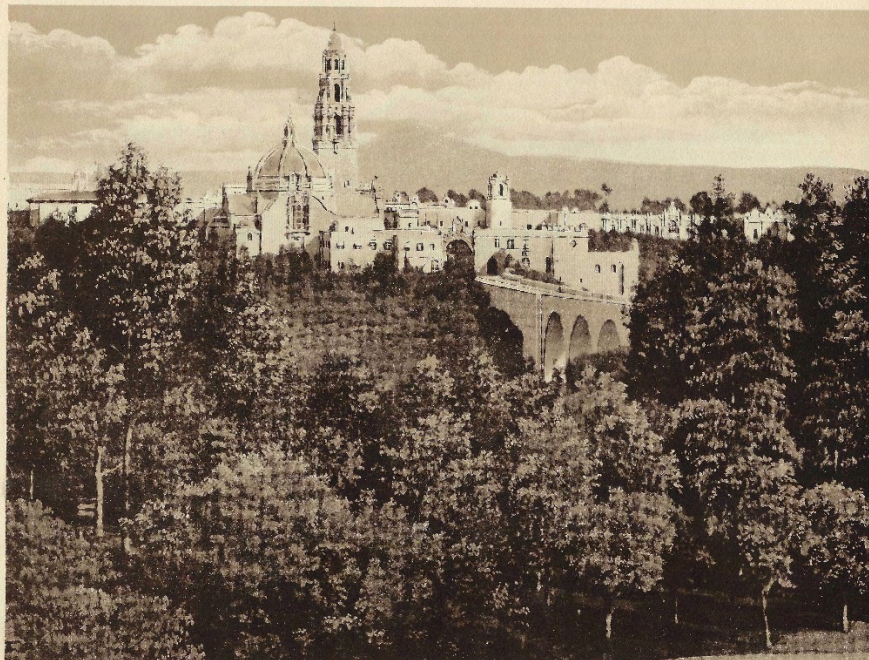


Bird's Eye View of San Diego, the Harbor and Coronado Beach.

A friend of NPHS donated a 1915 booklet with photos of the 1915 Exposition and other scenes in San Diego, which he had found in his late mother's belongings. We scanned the 46 pictures in the booklet and posted the four below on our Facebook page in December.



West Gate to Panama California Exposition showing Tower and Dome of California Building



California Tower and Dome and West approach from across the Canyon, Panama-California Exposition.



American National Bank Building.



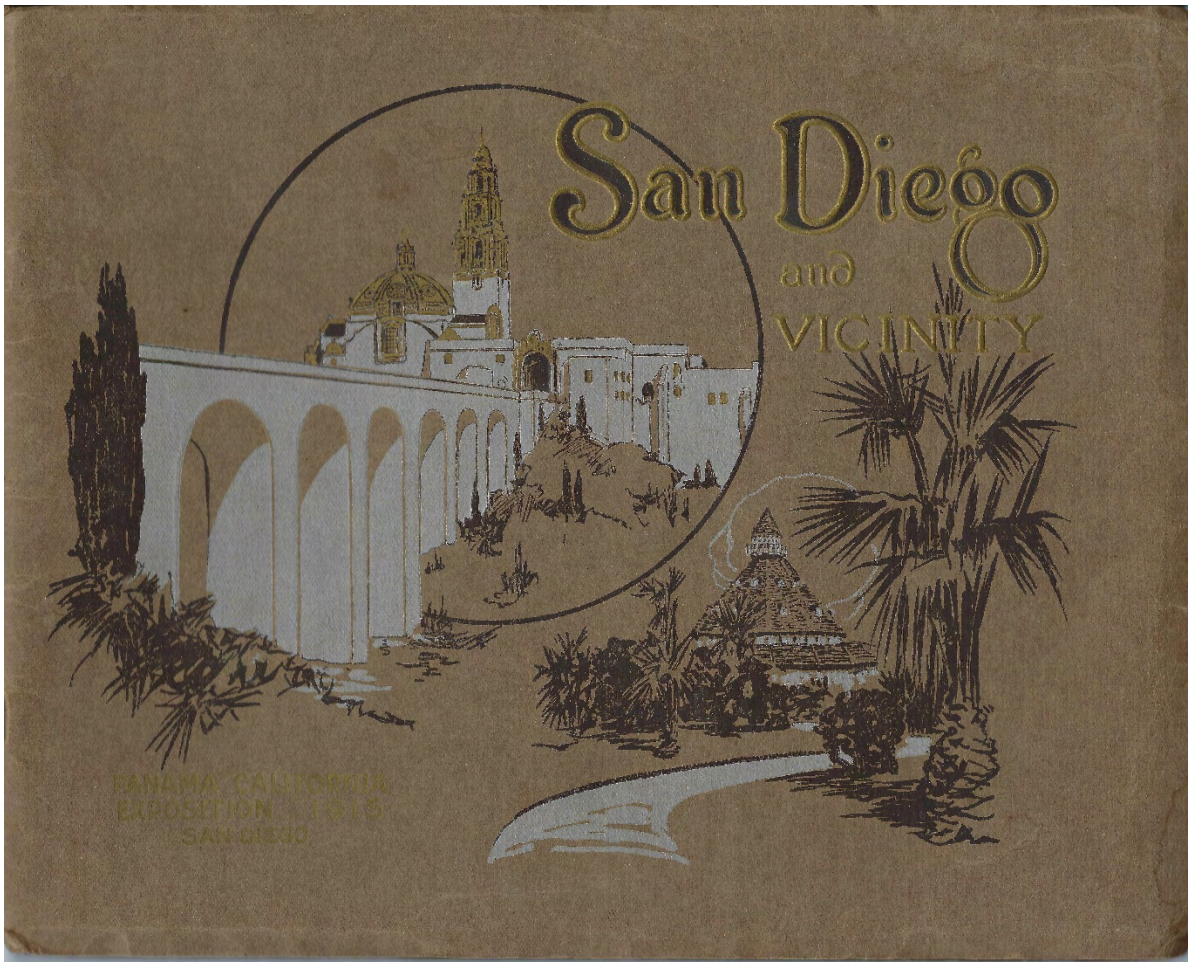
Hotel Del Coronado, Coronado.



Reflection of Varied Industries Building, in the large Lagoon, Panama-California Exposition.



Lake Side, near San Diego.



Botanical Building, Panama-California Exposition.