

AMERICA'S EXPOSITION
SAN DIEGO
1936

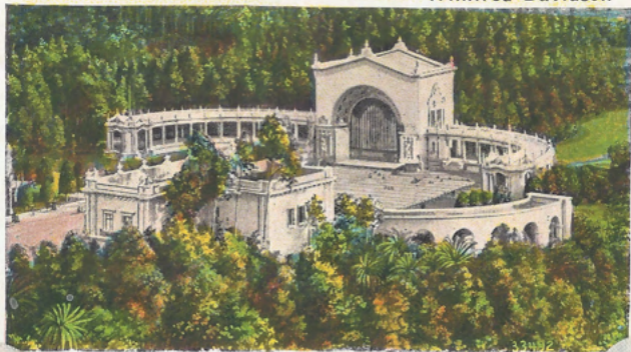


GREETINGS FROM SAN DIEGO, CALIFORNIA

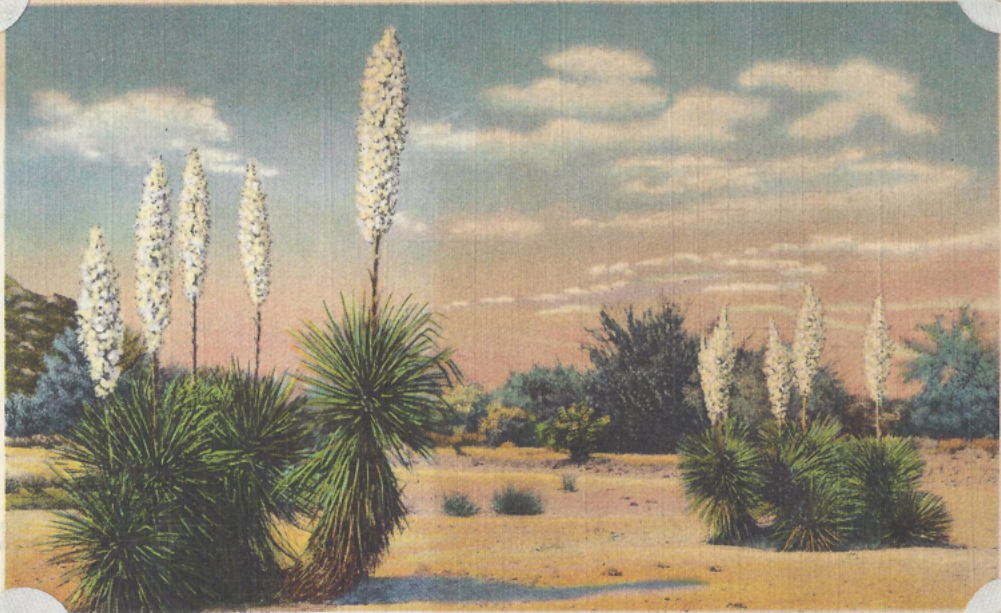
It is a summer city, and all days
Blow blue on white, bloom silver-green on gold.
Here rain is kind; here the harsh cry of cold
Comes gentled by the sun; and quiet ways
Of wind and weathers are but song and praise
And tales to tell: these scarlet roses hold
Stored memories of Spanish girls of old
Who here once danced, sweet cheeks and lips ablaze.

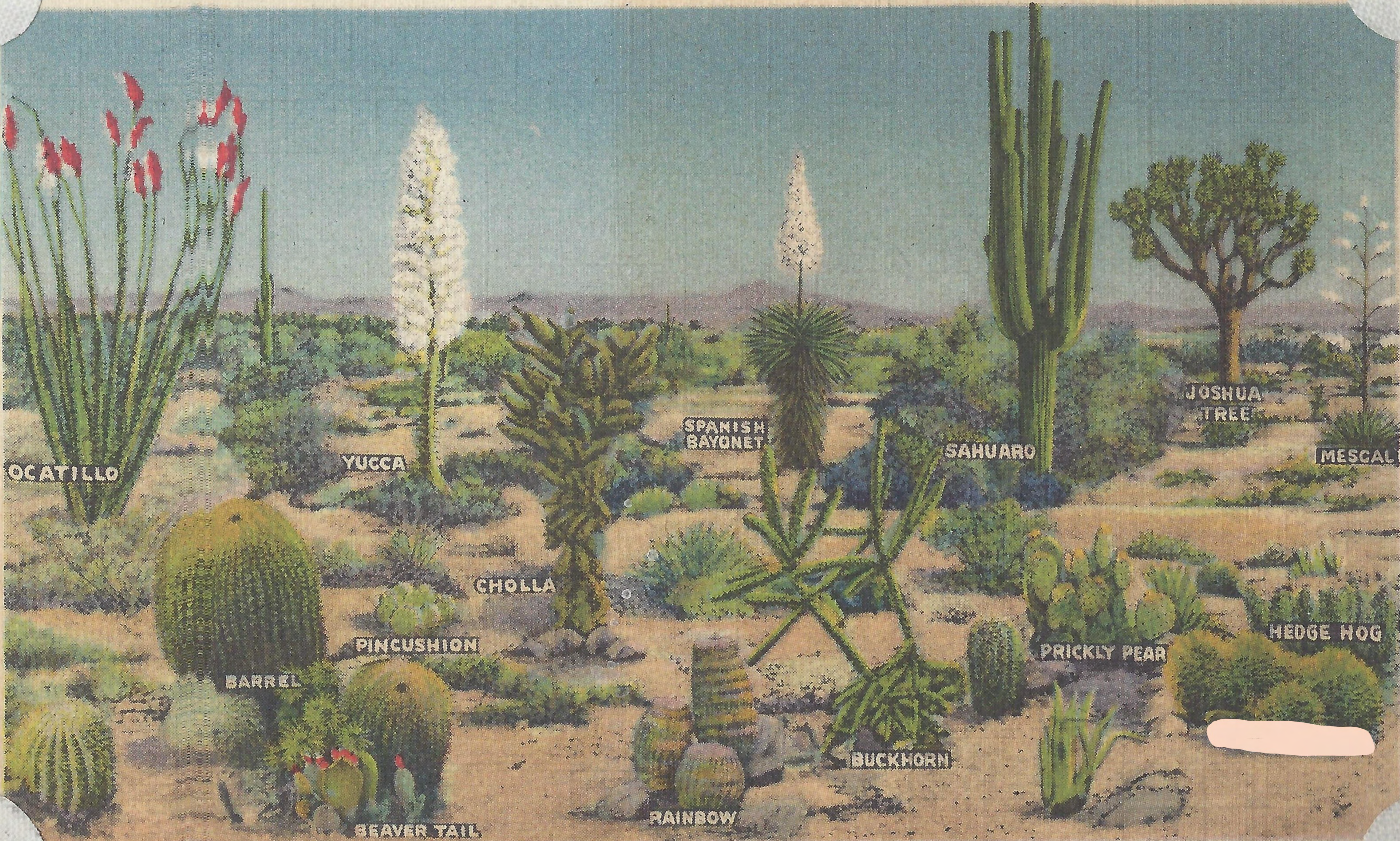
How shines the harbor . . . now swift traffic shines!
Leaving the water's rim, streets find flowered crests
Of eastern hills; where towers, where palms and pines
Wait leisurely on beauty. So, famed guests
Long linger here in calm expectancy
Of summer dreams beside this summer sea.

—Winifred Davidson



Open Air Pipe Organ, Balboa Park, San Diego, Calif.





OCATILLO

YUCCA

SPANISH BAYONET

SAHUARO

JOSHUA TREE

MESCAL

CHOLLA

PINCUSHION

BARREL

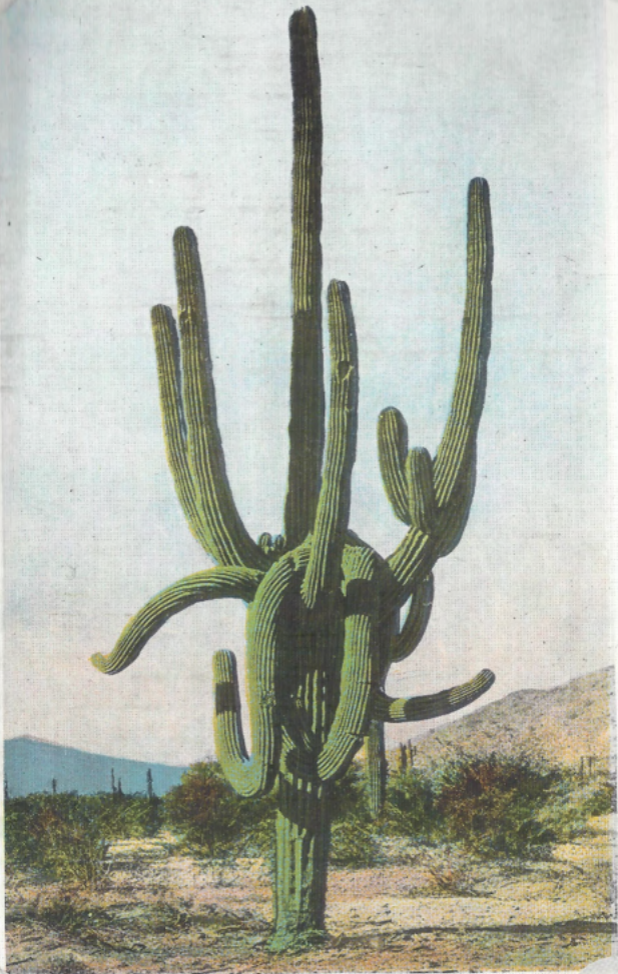
PRICKLY PEAR

HEDGE HOG

BUCKHORN

BEAVER TAIL

RAINBOW



H-1581 A GIANT CACTUS



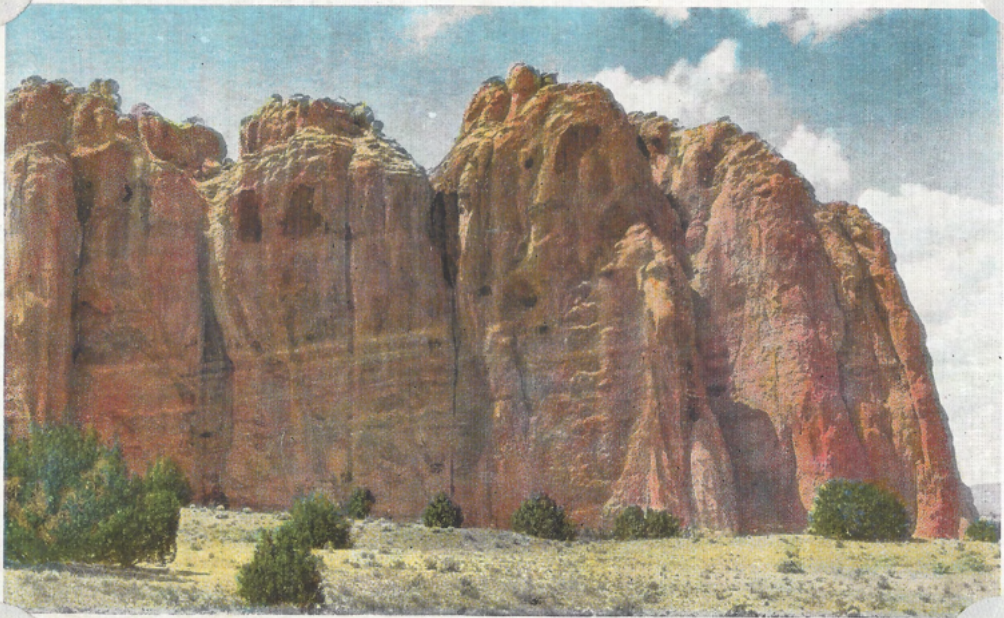
H-2895 THE ALVARADO, FRED HARVEY HOTEL, ALBUQUERQUE, NEW MEXICO



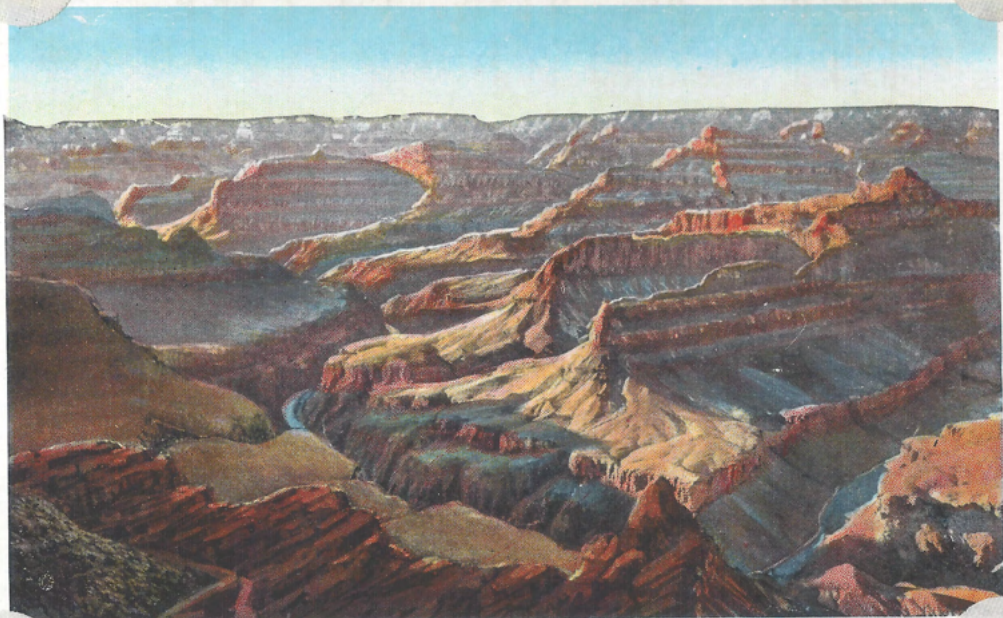
1582 CLIFF RUINS, RITO DE LOS FRIJOLES, PAJARITO PARK, NEW MEXICO



2413 GEOLOGICAL FORMATIONS NEAR GALLUP, NEW MEXICO



H-3154 INSCRIPTION ROCK, EL MORRO NATIONAL MONUMENT, NEAR GALLUP, NEW MEXICO

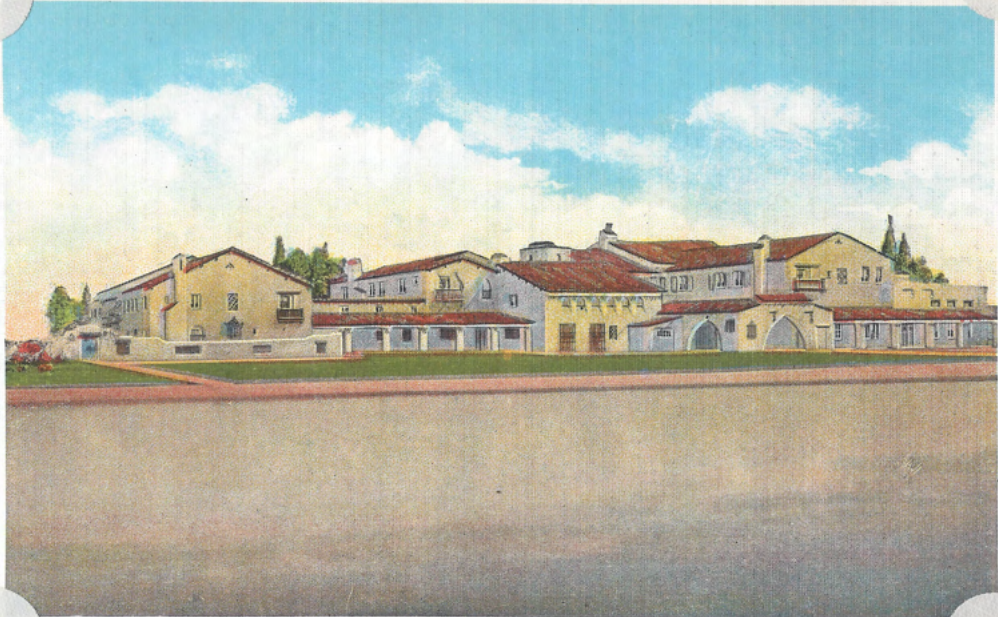


1.1514 SUNSET FROM MOHAVE POINT, GRAND CANYON NATIONAL PARK, ARIZONA



356 THE CARLSBAD CAVERN, NEAR CARLSBAD, NEW MEXICO.

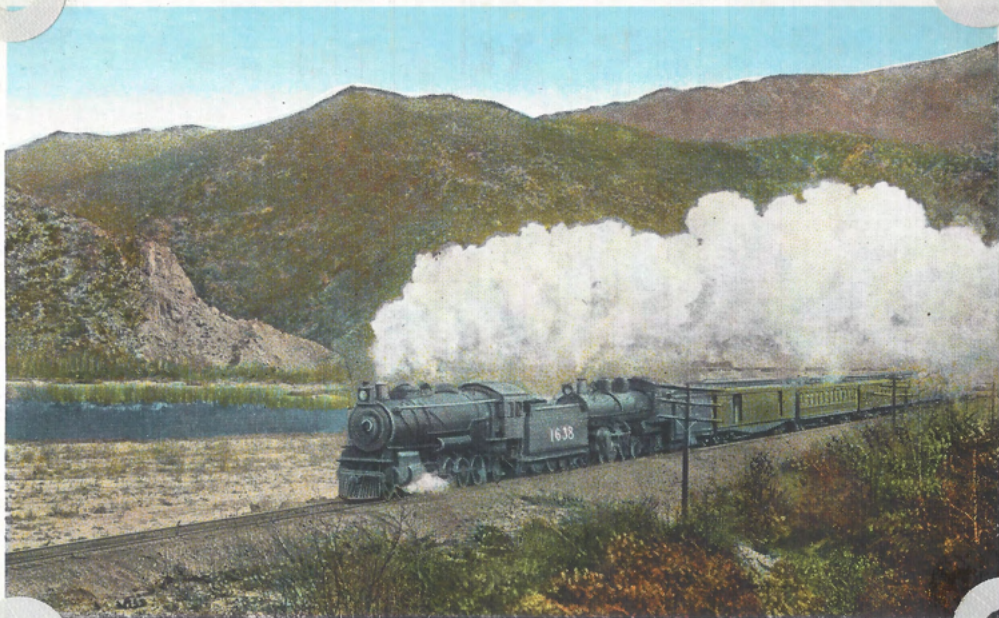
COPYRIGHT BY ROY V. [unreadable]



4-4224 LA POSADA, FRED HARVEY HOTEL, WINSLOW, ARIZONA



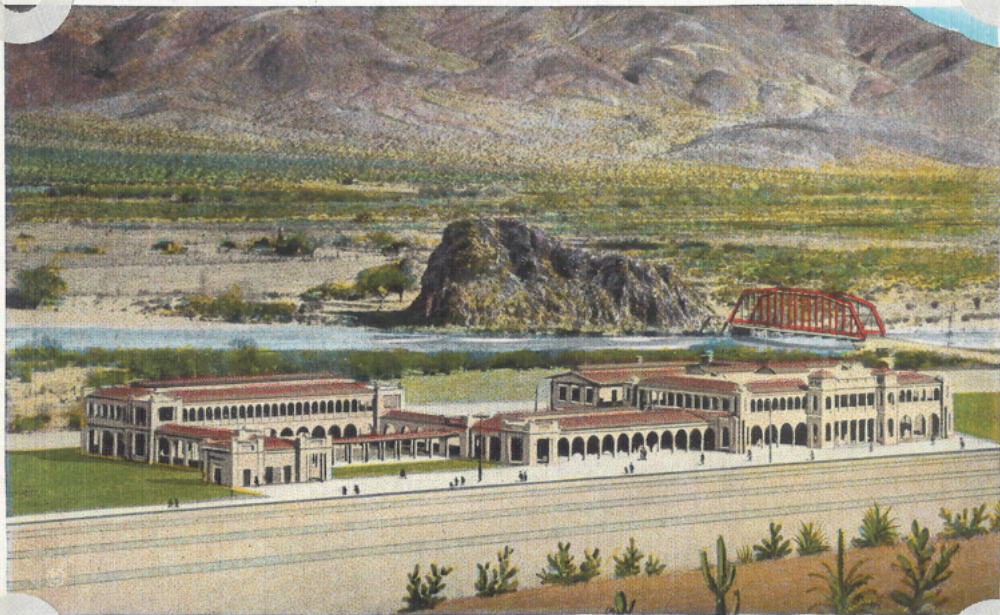
4152 HOPI INDIAN VILLAGE OF WALPI, ARIZONA.



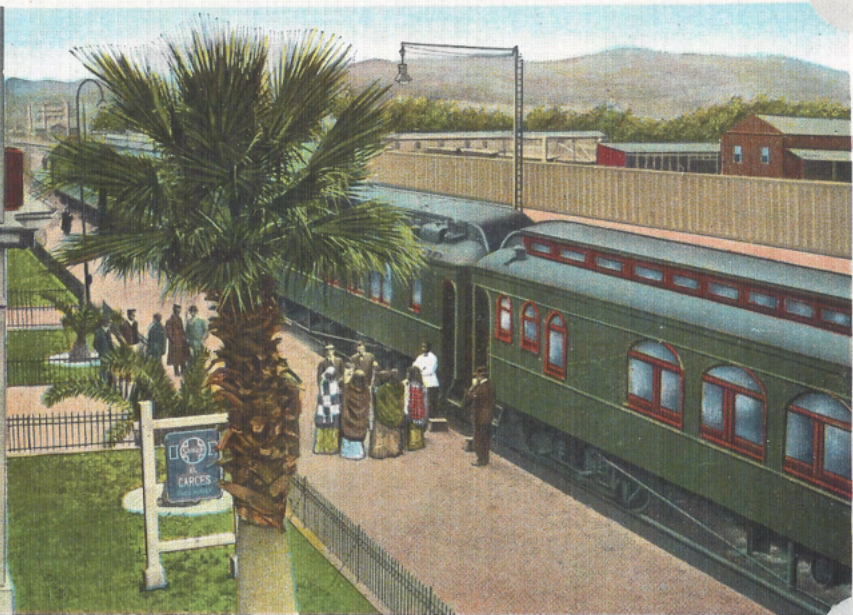
592 DESCENDING FROM CAJON PASS ON SOUTHERN CALIFORNIA SIDE OF THE COAST RANGE



H 64 SHEEPHERDING IN NAVAHO LAND, NEAR CANYON DE CHELLY, ARIZONA.



913 CASA DEL DESIERTO, FRED HARVEY HOTEL, BARSTOW, CALIFORNIA



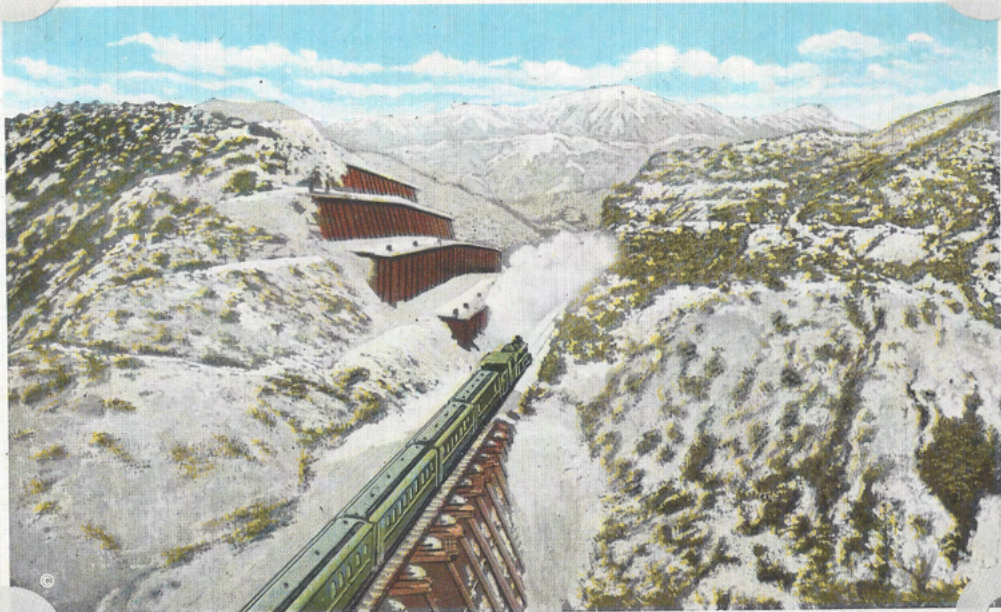
2286 THE SANTA FE LIMITED AT NEEDLES, CALIFORNIA



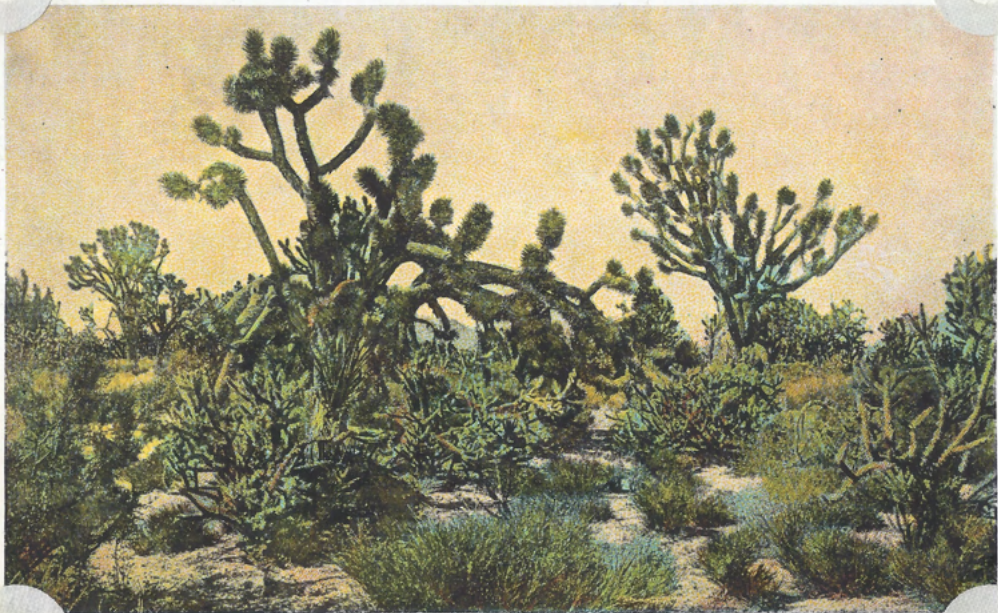
065 CACTUS IN BLOOM



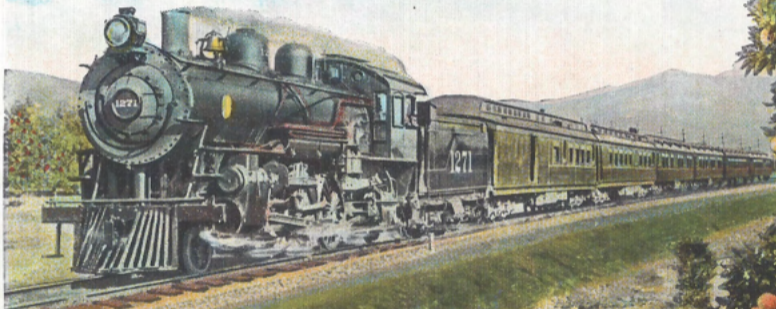
H.3149 MOJAVE DESERT NEAR BARSTOW, CALIFORNIA



2066 CAJON PASS AT THE SUMMIT OF THE COAST RANGE, CALIFORNIA



386 YUCCA TREES ON THE MOJAVE DESERT, NEAR BARSTOW, CALIFORNIA



2290 SANTA FE TRAIN ENTERING SOUTHERN CALIFORNIA THROUGH THE ORANGE GROVES



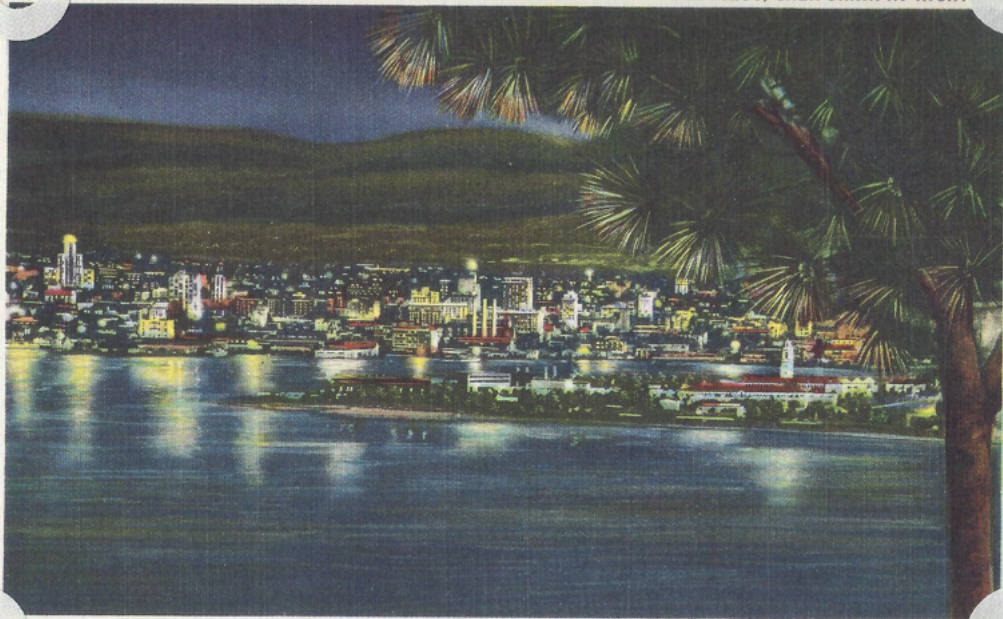
1591 SANTA FE LIMITED GOING UP CAJON PASS FROM SOUTHERN CALIFORNIA SIDE OF THE COAST RANGE





4501

BUSINESS DISTRICT OF SAN DIEGO, CALIFORNIA AT NIGHT



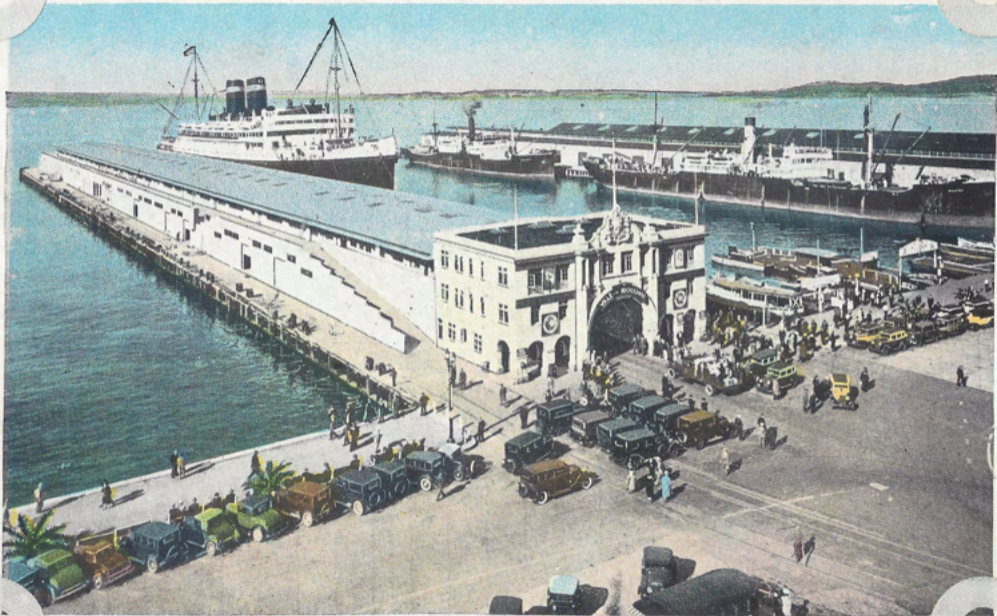
NORTH ISLAND, U. S. NAVAL AIR STATION IN FOREGROUND





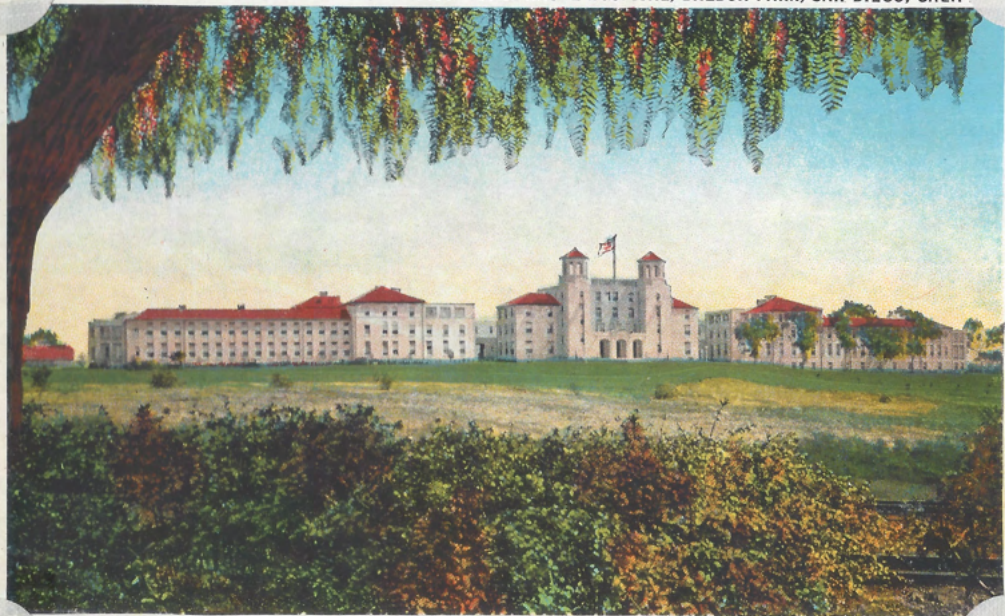


114A:—Broadway Passenger Terminal, San Diego, Calif.

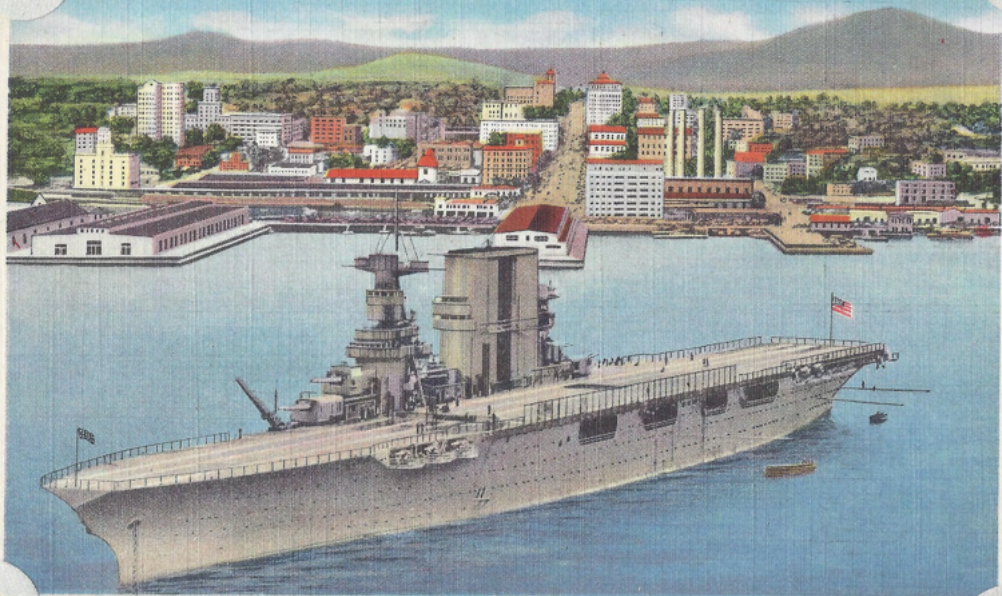


Lee Passmore.

4450 U. S. NAVAL HOSPITAL, BALBOA PARK, SAN DIEGO, CALIF

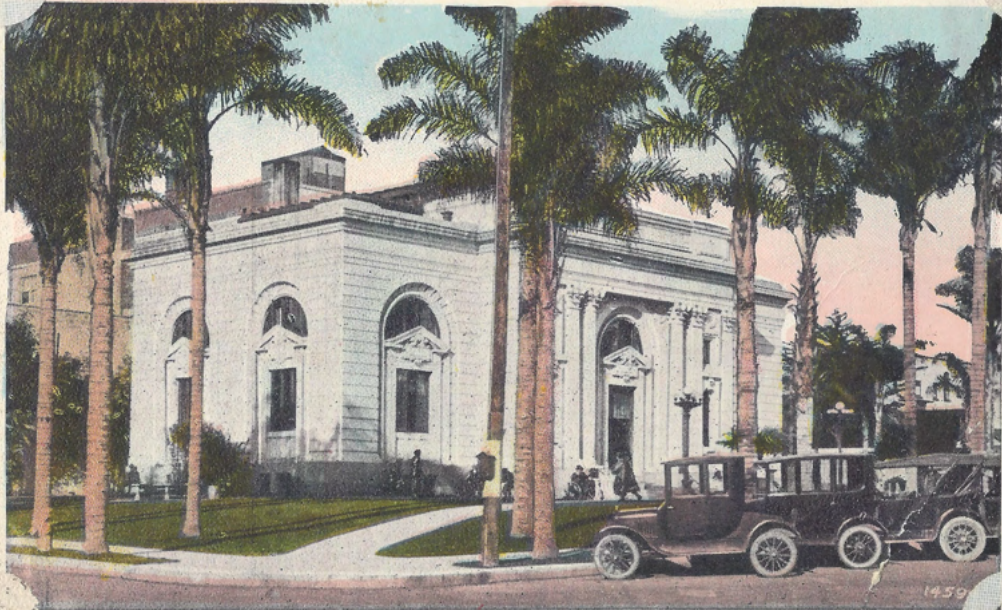


4520 U. S. NAVY PLANE CARRIER AT ANCHOR—LOOKING UP BROADWAY, SAN DIEGO, CALIFORNIA





112:—San Diego Public Library, San Diego, Calif.



Pub. by the M. Kashower Co., Los Angeles, Cal.

POST



CARD

THIS SPACE FOR WRITING

THIS SIDE IS FOR THE ADDRESS

PLACE
STAMP HERE

M
A
D
E
I
N
U
S
A

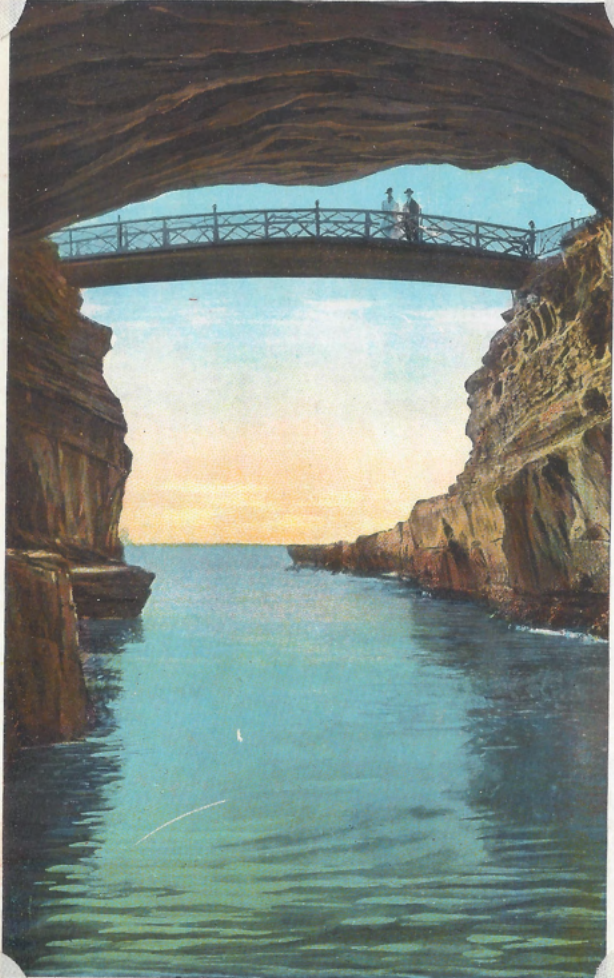
70:—Sunset Cliffs, Ocean Beach, San Diego, Calif.



89:—Naval Training Station, near Pt. Loma, San Diego, Calif.



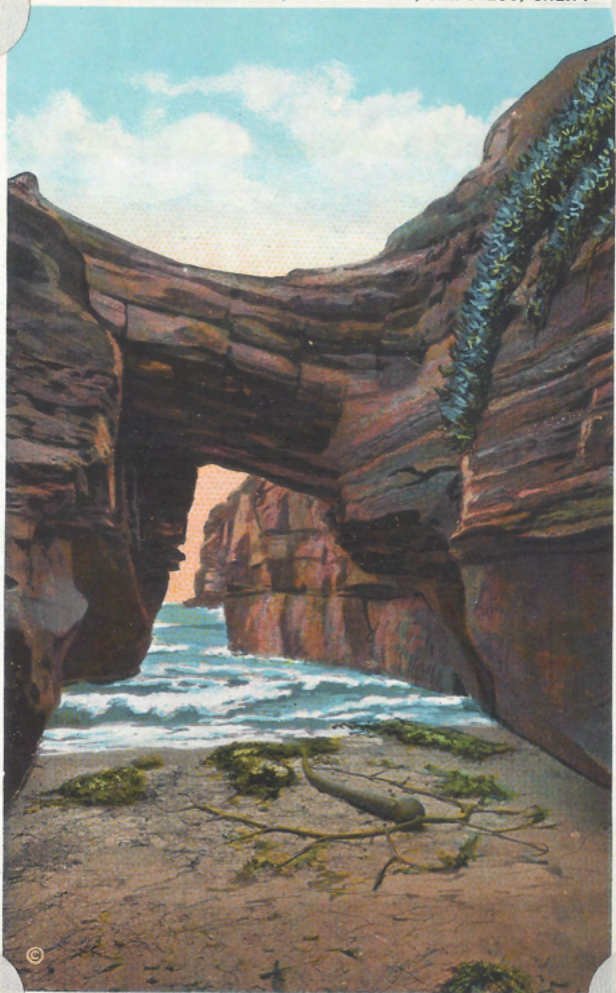
17637





GIANT BREAKER





69A:—Sunset Cliffs, Ocean Beach, San Diego, Calif.

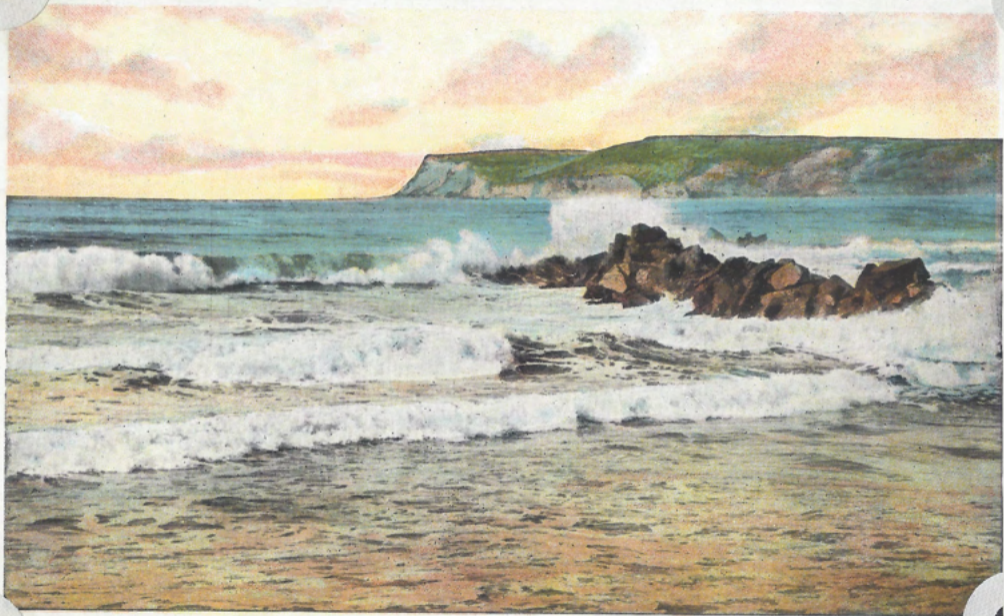




OLD SPANISH LIGHTHOUSE,
POINT LOMA, SAN DIEGO, CALIFORNIA

THE
1912

4329 POINT LOMA FROM HOTEL DEL CORONADO, SAN DIEGO, CALIF.



122:—Point Loma Light House, San Diego, Calif.





HERE - AT POINT LOMA
HEAD - ON THE AFTERNOON
OF SEPTEMBER 28 1542

JUAN RODRIGUEZ
CABRILLO

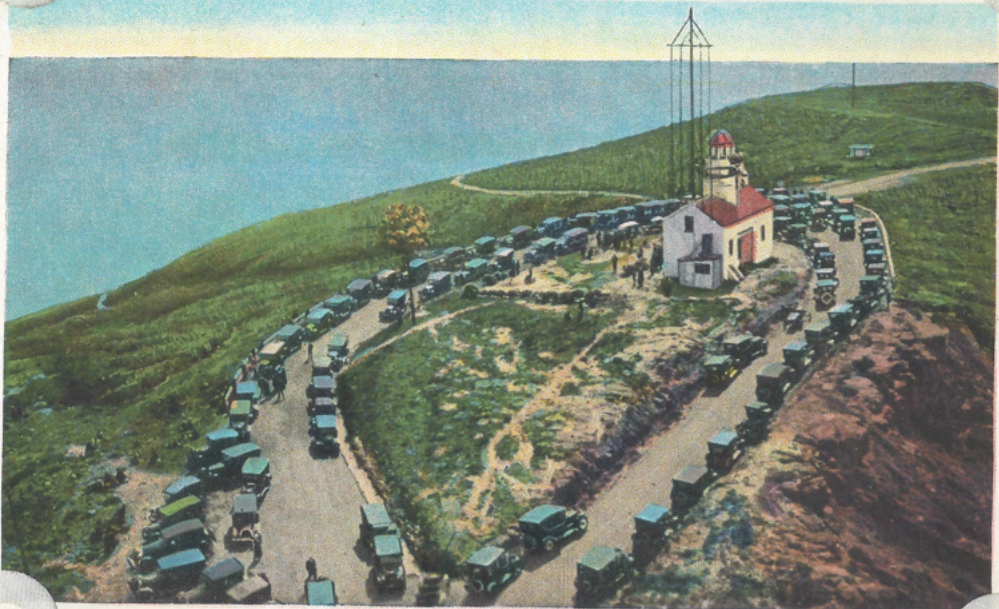
DISTINGUISHED PORTUGUESE
NAVIGATOR

IN
THE SERVICE OF SPAIN -
COMMANDING THE FLAG
SHIP SAN SALVADOR MADE
HIS FIRST ALTA CALI
FORNIA LANDFALL AND
THUS DISCOVERED WHAT
IS NOW THE STATE OF
CALIFORNIA

CABRILLO - WITH HIS COM
PANIONS - CAME ASHORE
ON POINT LOMA AT WHAT
IS NOW BALLAST POINT
IN THIS PORT "CLOSED
AND VERY GOOD" WHICH
THEY NAMED SAN MIGUEL

CABRILLO'S CARAVELS -
ASSEMBLED AT NAVIDAD
MEXICO UNDER ORDERS OF
DON ANTONIO DE MENDOZA
SAILED FROM THAT PORT
JUNE 27 1542

4390 OLD SPANISH LIGHTHOUSE, POINT LOMA, SAN DIEGO, CALIFORNIA





133:—Ocean Front, Coronado, Calif.



90:—U. S. Aircraft carrier passing Point Loma, San Diego Harbor, Calif.

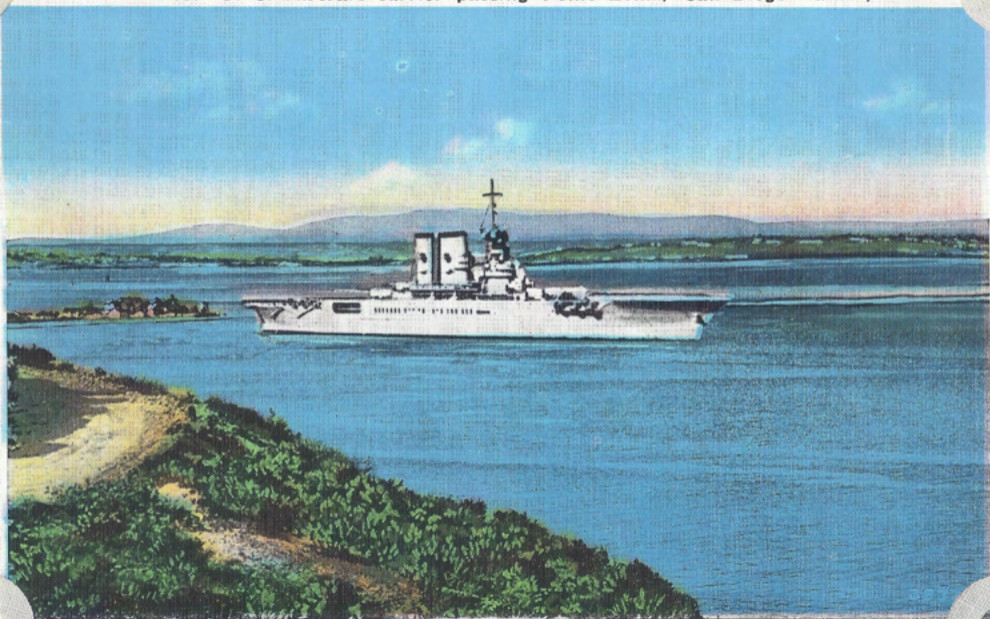
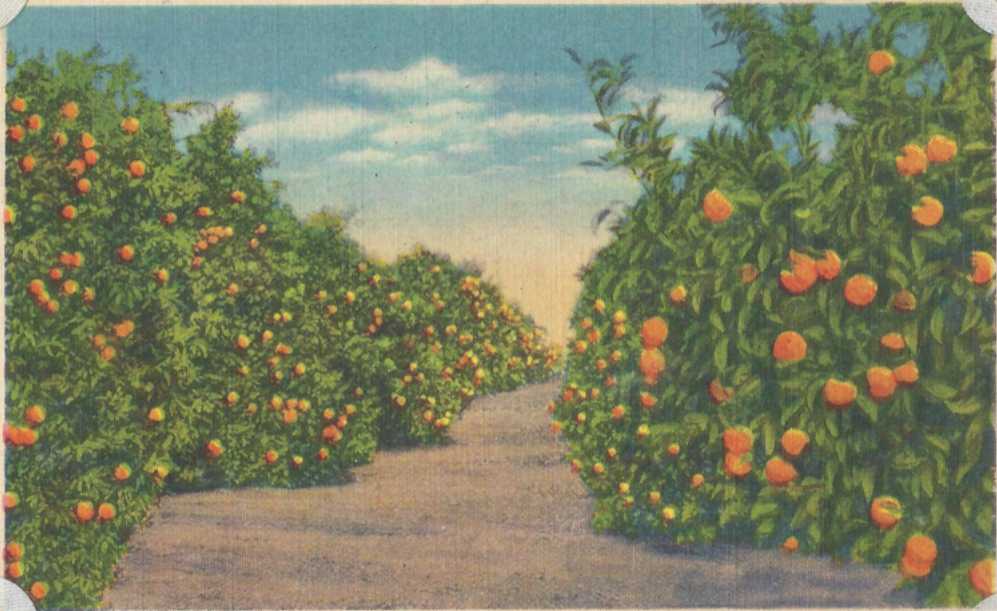
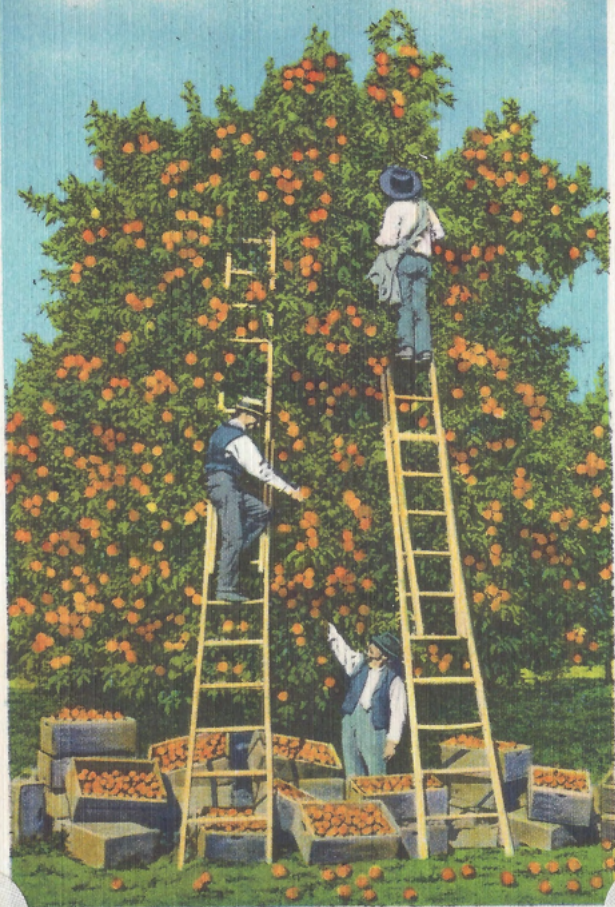


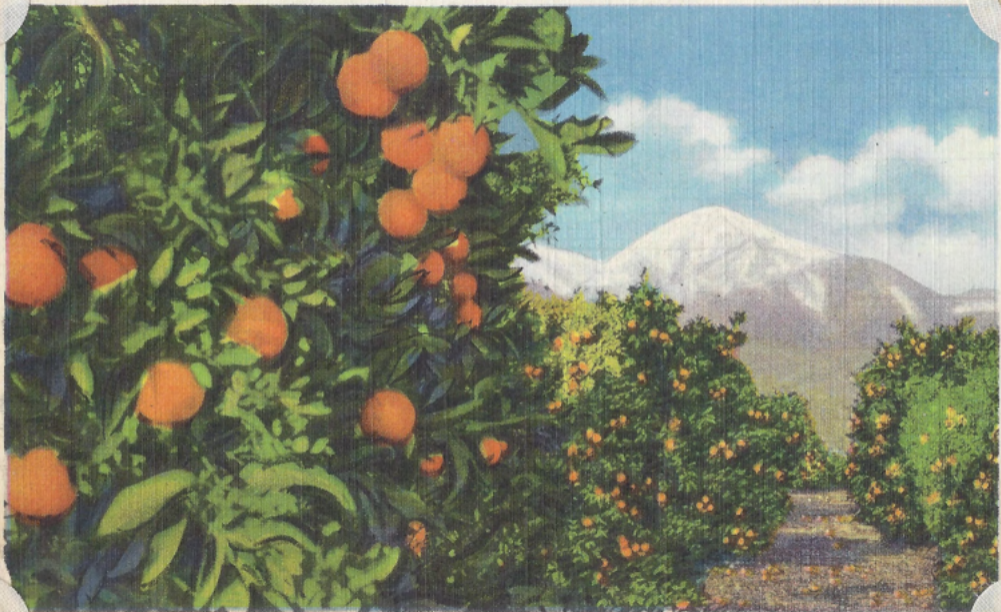
Photo by Lee Passmore







SUNSHINE—FRUITS—FLOWERS AND SNOW

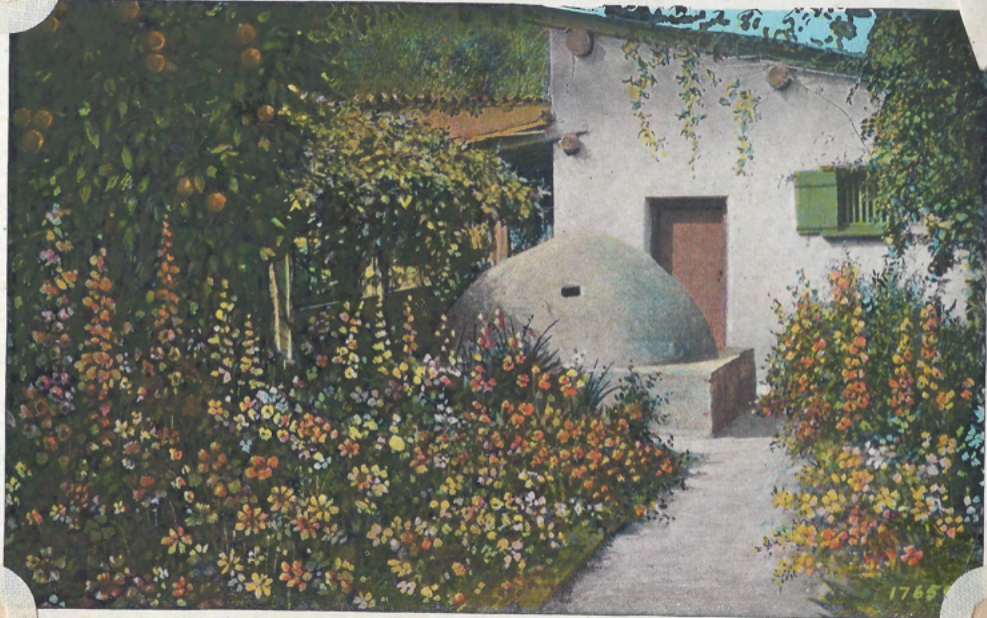


5:—Chapel in which Ramona was married—Ramona's Marriage Place, San Diego, Calif.





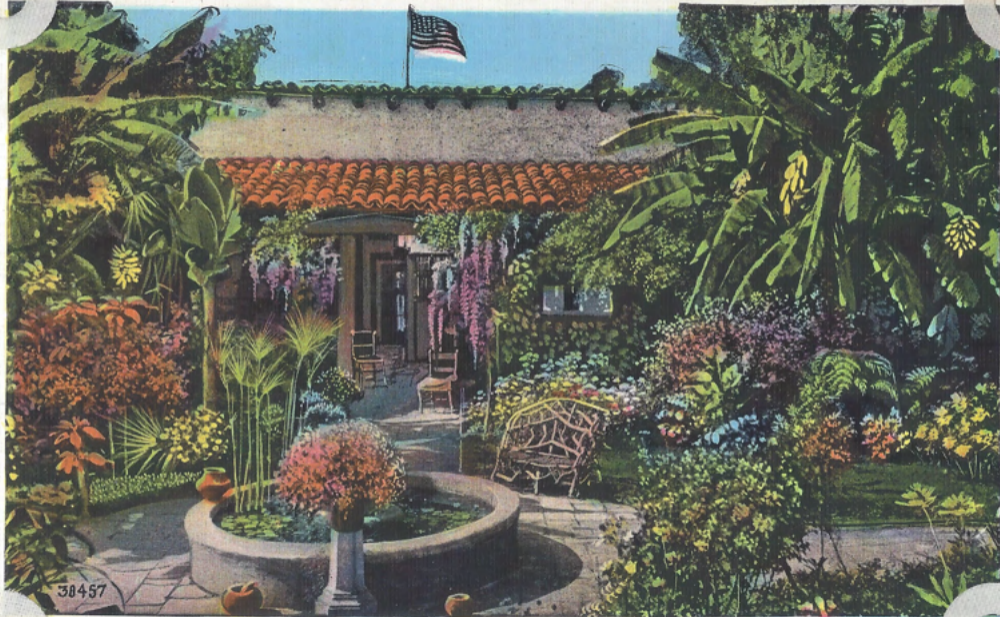
67:—The Old Spanish Oven, Ramona's Marriage Place, San Diego, Calif.



4:—Ramona's Marriage Place and Old Town Church, Old Town, San Diego, Calif.



15:—THE COURT, RAMONA'S MARRIAGE PLACE, SAN DIEGO, CALIF.



38457

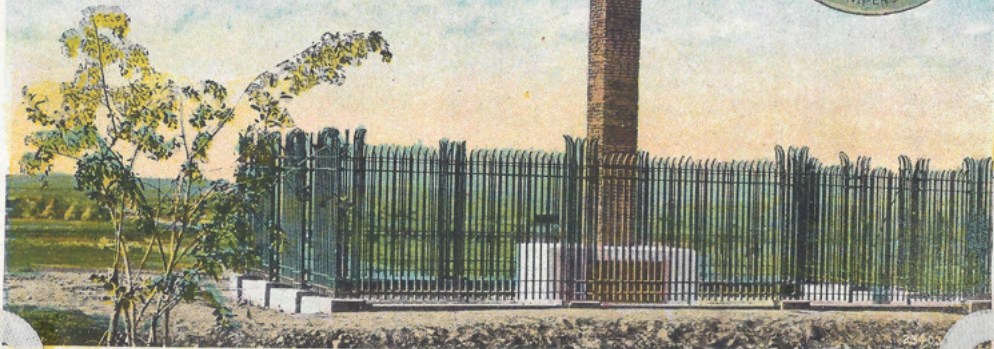


BY THE ANCIENT INDIAN VILLAGE OF COSÓY
DISCOVERED AND NAMED SAN MIGUEL BY CABRILLO IN 1542
VISITED AND CHRISTENED SAN DIEGO DE ALCALA BY VIZCAINO IN 1602

HERE THE FIRST CITIZEN
FRAY JUNIPERO SERRA
PLANTED CIVILIZATION IN CALIFORNIA

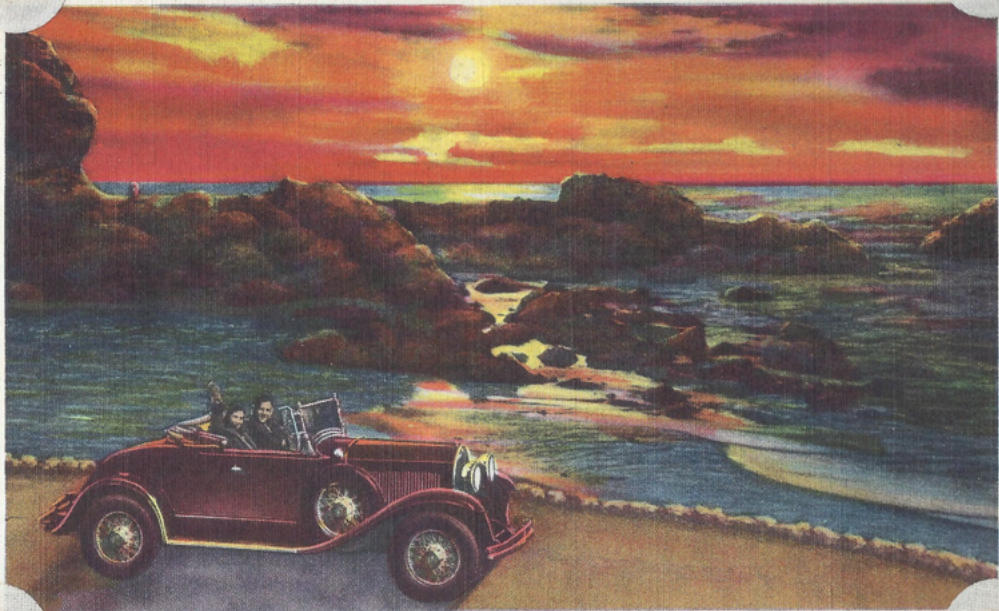
HERE HE FIRST RAISED THE CROSS
HERE BEGAN THE FIRST MISSION
HERE FOUNDED THE FIRST TOWN—SAN DIEGO
• JULY 16 1769

IN MEMORY OF HIS AND HIS WORKS
THE ORDER OF MALTA DID



6:—Wishing Well, Ramona's Marriage Place, San Diego, Calif.





4335 CORONADO TENT CITY, HOTEL DEL CORONADO IN DISTANCE, CORONADO, CALIFORNIA





118:—"The Cove," Coronado Islands, Mexico, Near San Diego, Cal.



INTERIOR. E. SILVESTRE CURIO STORE, TIJUANA, MEXICO







AGUA CALIENTE, BAJA CALIFORNIA, MEXICO





45 A PORTION OF SAN DIEGO, CALIFORNIA, SKYLINE SHOWING EL CORTEZ HOTEL AND SPRECKELS BUILDING









AMERICA'S EXPOSITION, SAN DIEGO, CALIFORNIA



4413

REFLECTIONS IN THE LILY POND



AMERICA'S EXPOSITION AT SAN DIEGO, CALIFORNIA

5A-H44



AMERICA'S EXPOSITION, SAN DIEGO, CALIFORNIA

54:—Botanical Bldg., Balboa Park, San Diego, Calif.

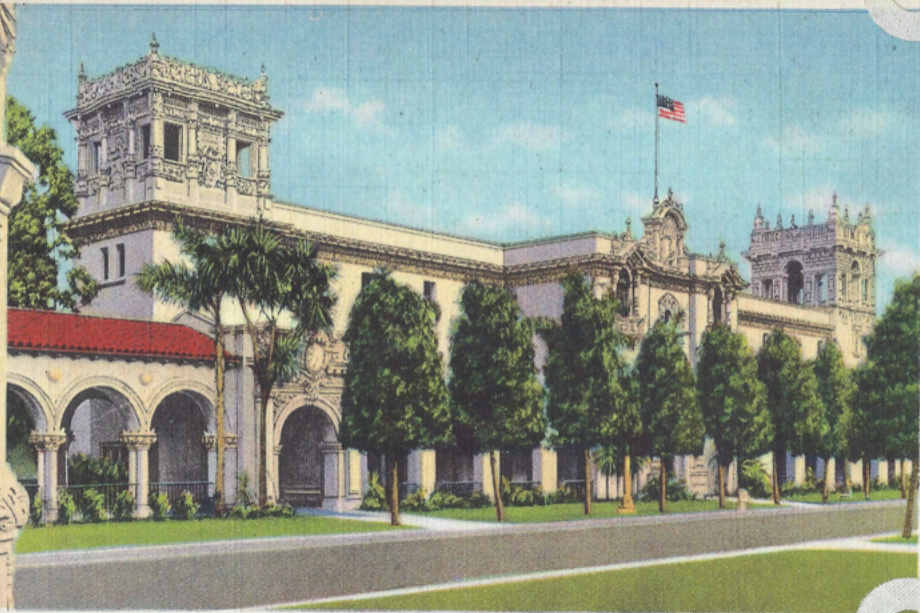




AMERICA'S EXPOSITION AT SAN DIEGO, CALIFORNIA



HOUSE OF HOSPITALITY



AMERICA'S EXPOSITION AT SAN DIEGO, CALIFORNIA



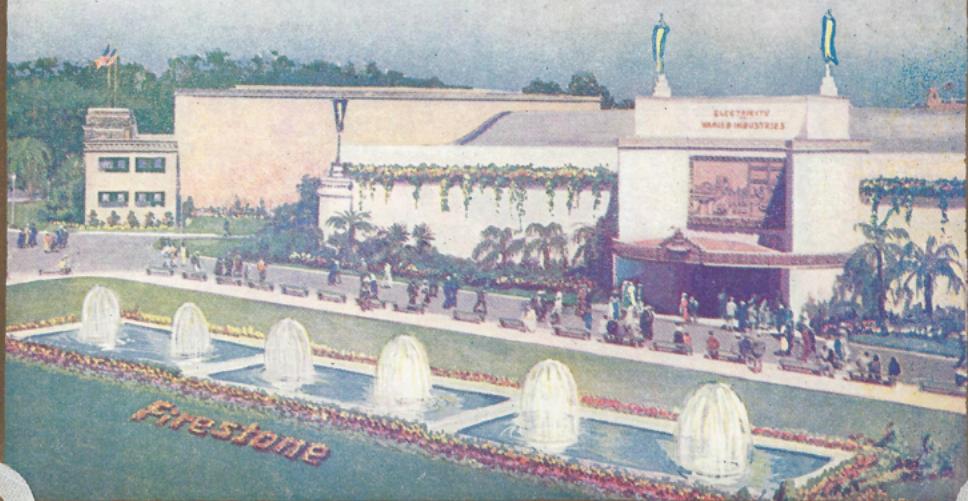


AMERICA'S EXPOSITION AT SAN DIEGO, CALIFORNIA

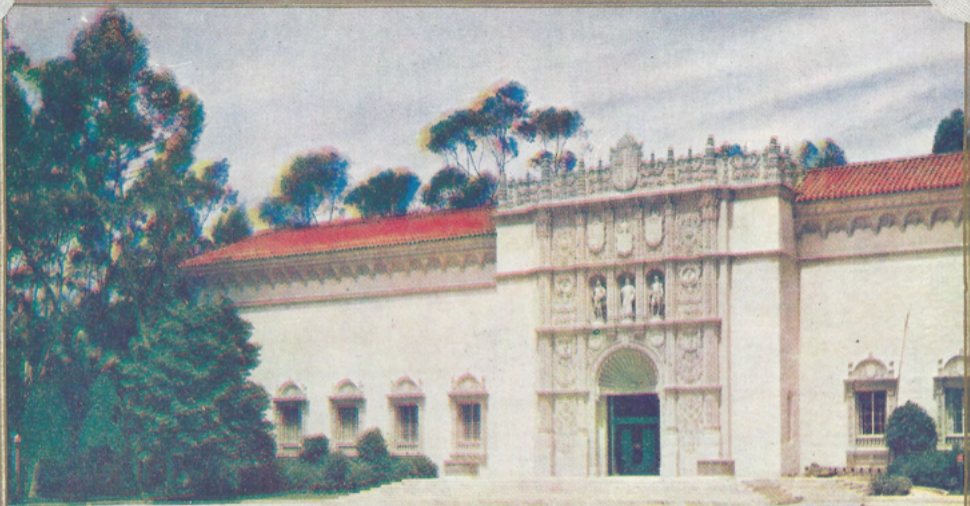
7
PUENTE CABRILLO FROM CACTUS GARDENS



AMERICA'S EXPOSITION, SAN DIEGO, CALIFORNIA



ELECTRICITY BLDG



FINE ARTS Gallery

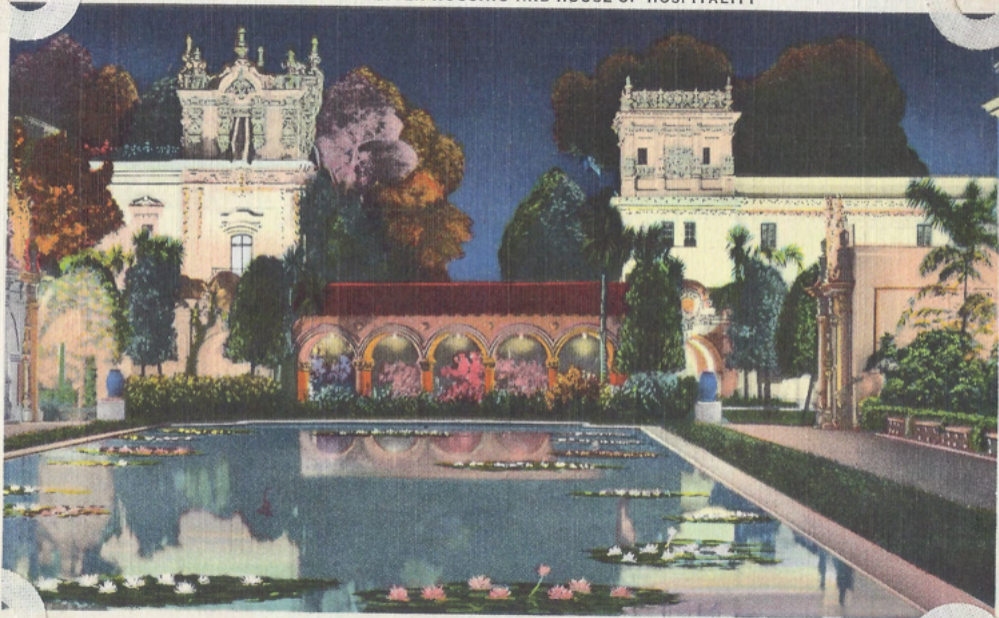


HOLLYWOOD MOTION PICTURE HALL



EASTERN ENTRANCE

4
PALACE OF BETTER HOUSING AND HOUSE OF HOSPITALITY



AMERICA'S EXPOSITION, SAN DIEGO, CALIFORNIA



SAN DIEGO EXPOSITION, CALIFORNIA

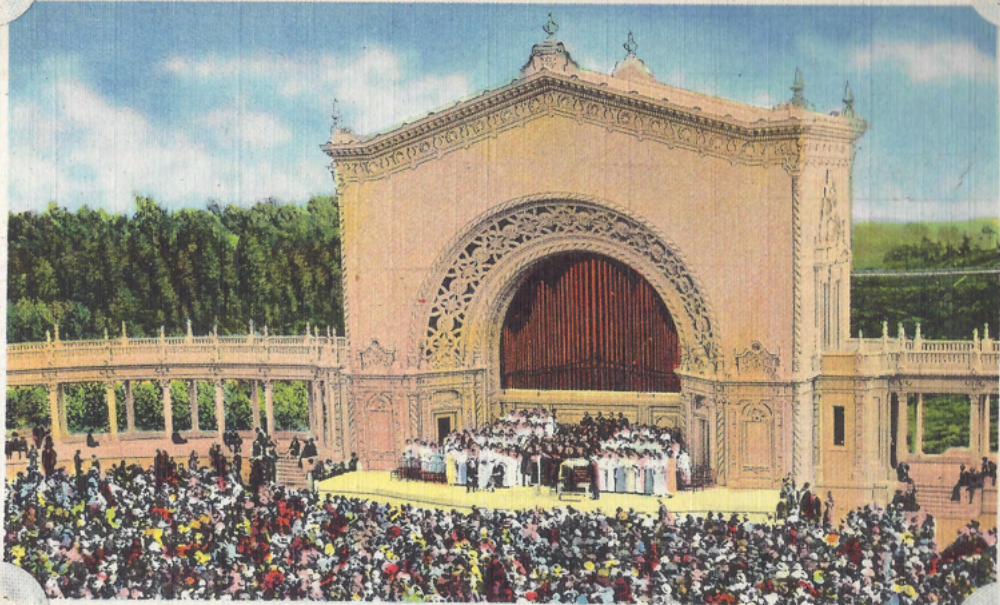


AMERICA'S EXPOSITION, SAN DIEGO, CALIFORNIA

PALACE OF NATURAL HISTORY



SAN DIEGO EXPOSITION, CALIFORNIA



AMERICA'S EXPOSITION AT SAN DIEGO, CALIFORNIA



AMERICA'S EXPOSITION, SAN DIEGO, CALIFORNIA

4417

TOWER OF THE PALACE OF SCIENCE



AMERICA'S EXPOSITION AT SAN DIEGO, CALIFORNIA

SA-H451



AMERICA'S EXPOSITION, SAN DIEGO, CALIFORNIA



AMERICA'S EXPOSITION, SAN DIEGO, CALIFORNIA



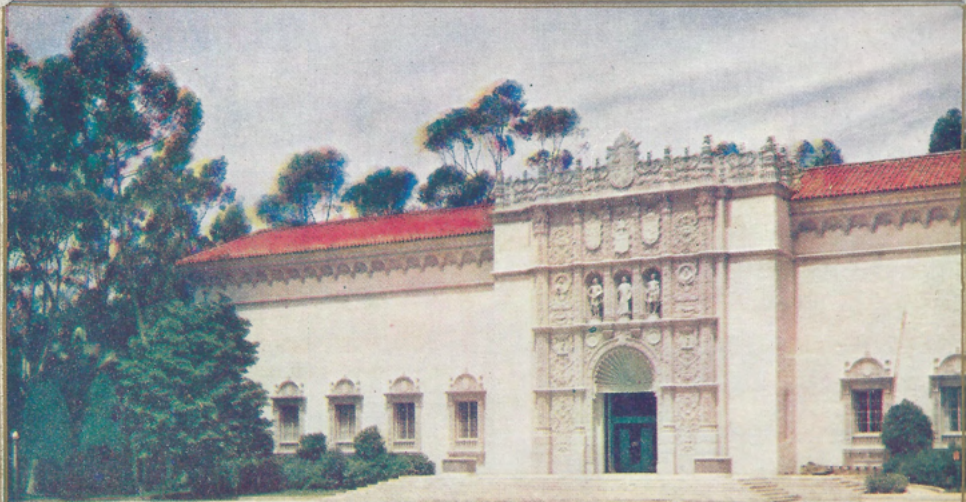
AMERICA'S EXPOSITION, SAN DIEGO, CALIFORNIA



AMERICA'S EXPOSITION, SAN DIEGO, CALIFORNIA



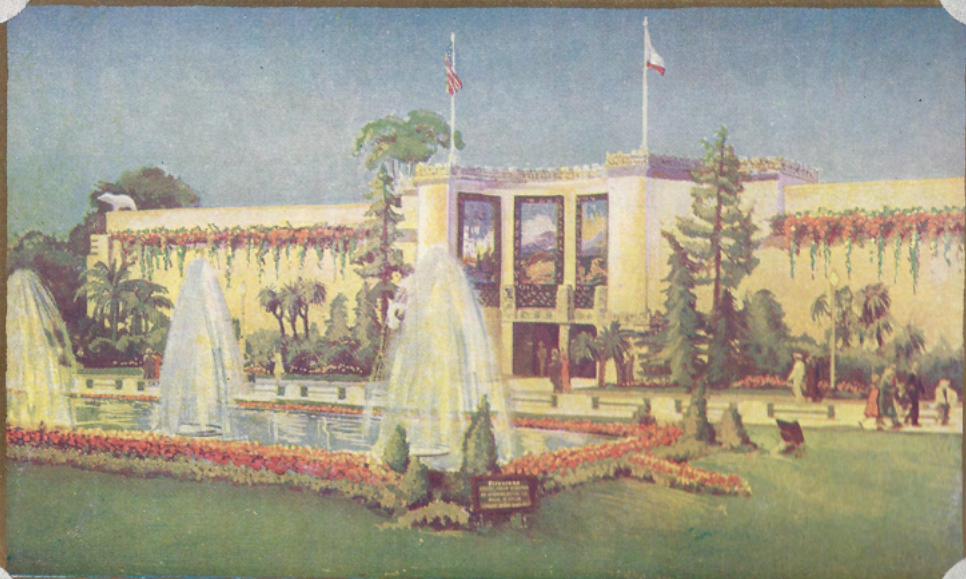
AMERICA'S EXPOSITION, SAN DIEGO, CALIFORNIA



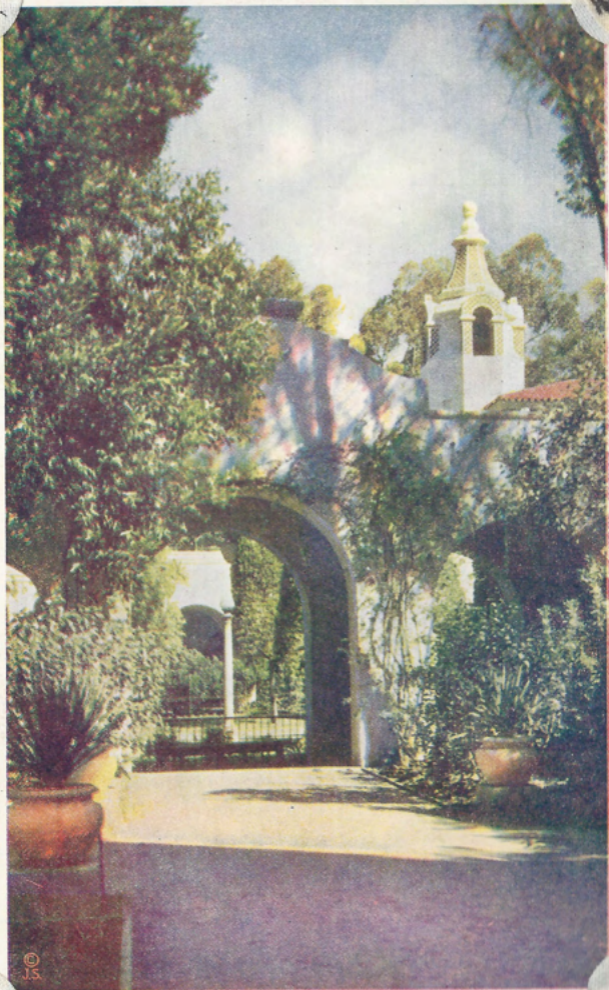
DOORWAY OF FINE ARTS GALLERY



PLAZA DE AMERICA



CALIFORNIA STATE BLDG.



©
J.S.

PALACE OF PHOTOGRAPHY



© I.S.
PALACE OF FOODS



CALIFORNIA TOWER

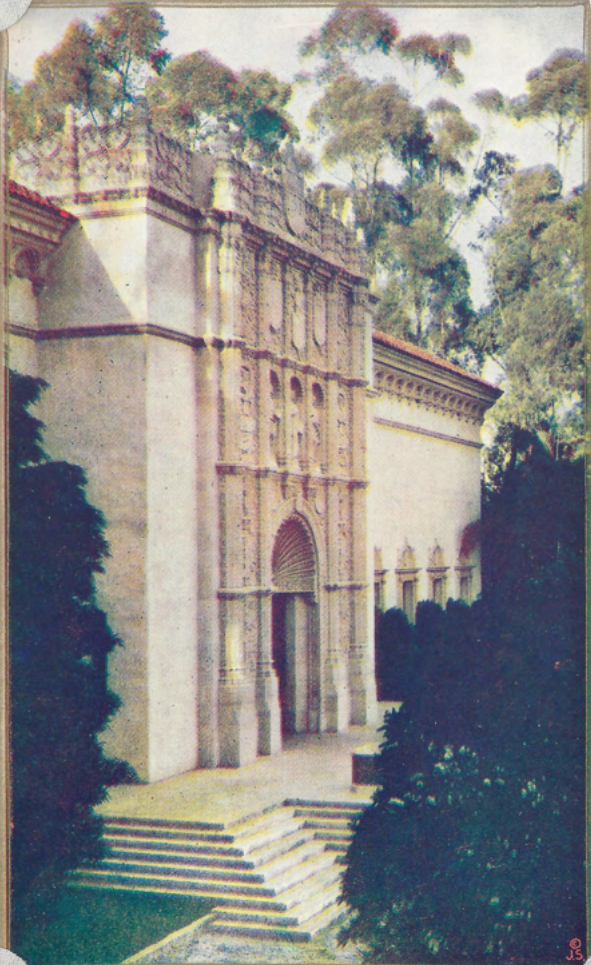


INTRIGUING PATHWAY



50

HOUSE OF HOSPITALITY



© JS

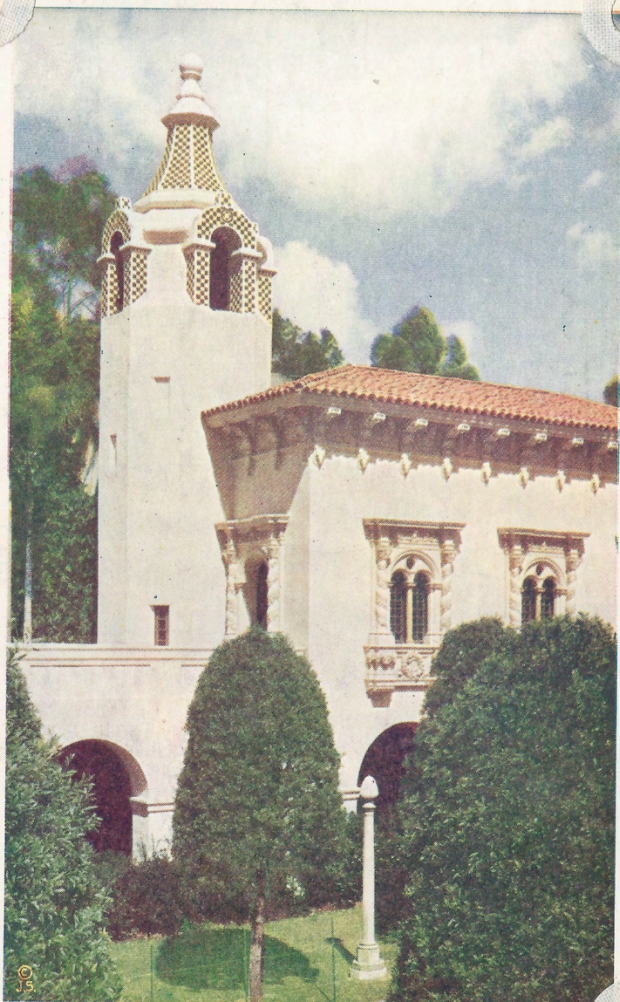
FINE ARTS GALLERY



THE MIDWAY



ARCO del FUTURO



©
J.S.

PALACE OF PHOTOGRAPHY



AMERICA'S EXPOSITION AT SAN DIEGO, CALIFORNIA

GLOBE — BEN HUR SPANISH PATIO



FOOD BUILDING, SAN DIEGO EXPOSITION

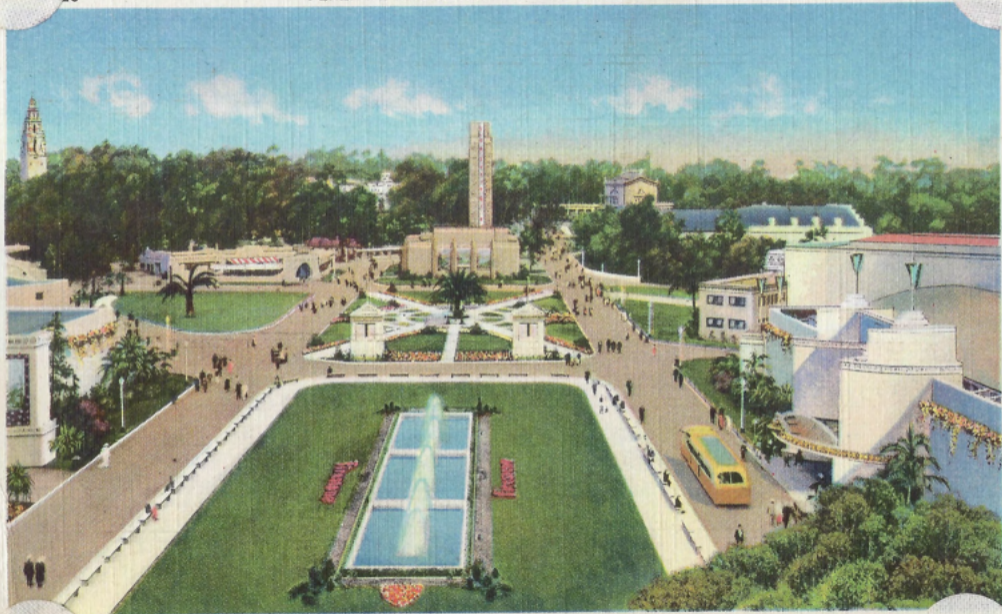
4453

PATIO, HOUSE OF HOSPITALITY



AMERICA'S EXPOSITION, SAN DIEGO, CALIFORNIA

5A



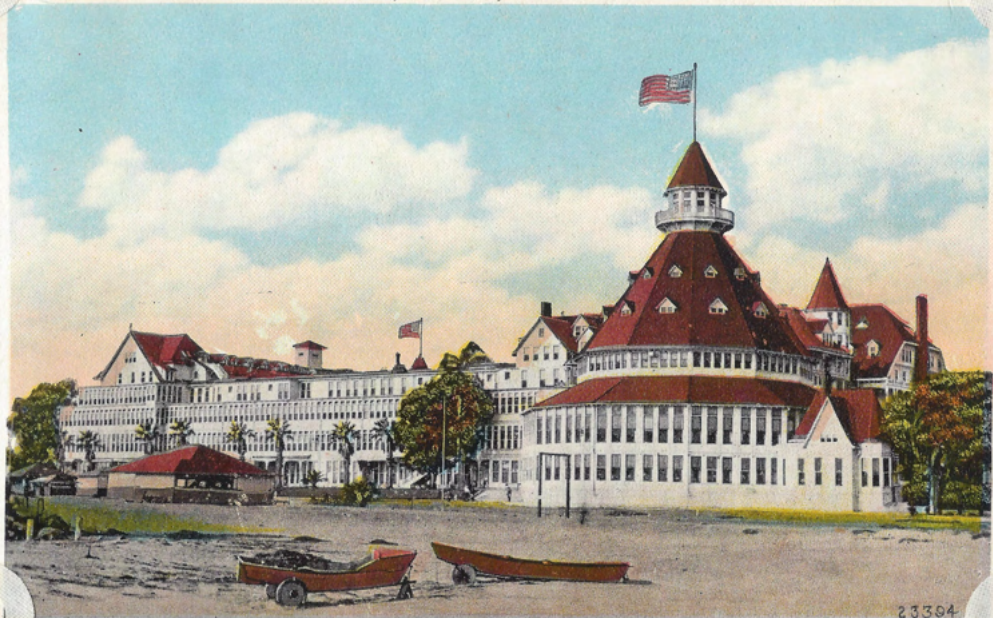
AMERICA'S EXPOSITION, SAN DIEGO, CALIFORNIA



NORTH ISLAND, U. S. NAVAL AIR STATION IN FOREGROUND



47:—Hotel Del Coronado, Coronado, Calif.





4518 SKYLINE OF SAN DIEGO, CALIFORNIA, FROM GROUNDS OF U. S. NAVAL TRAINING STATION



22.—Bathing Beach, La Jolla, Calif.

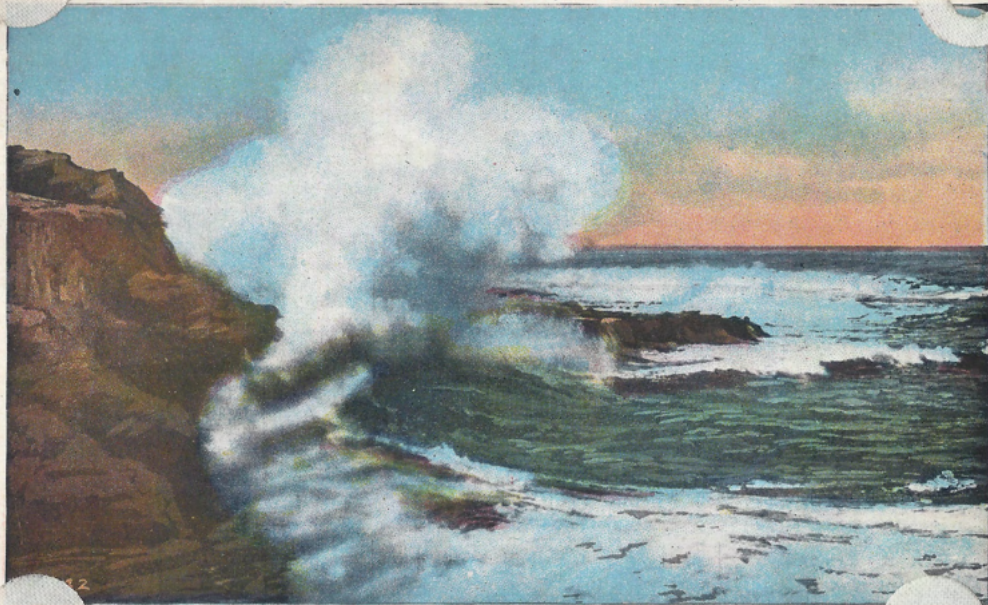




137:—Seven Caves at La Jolla near San Diego, Calif.



22A:—Breakers on La Jolla Rocky Coast, San Diego, Calif.

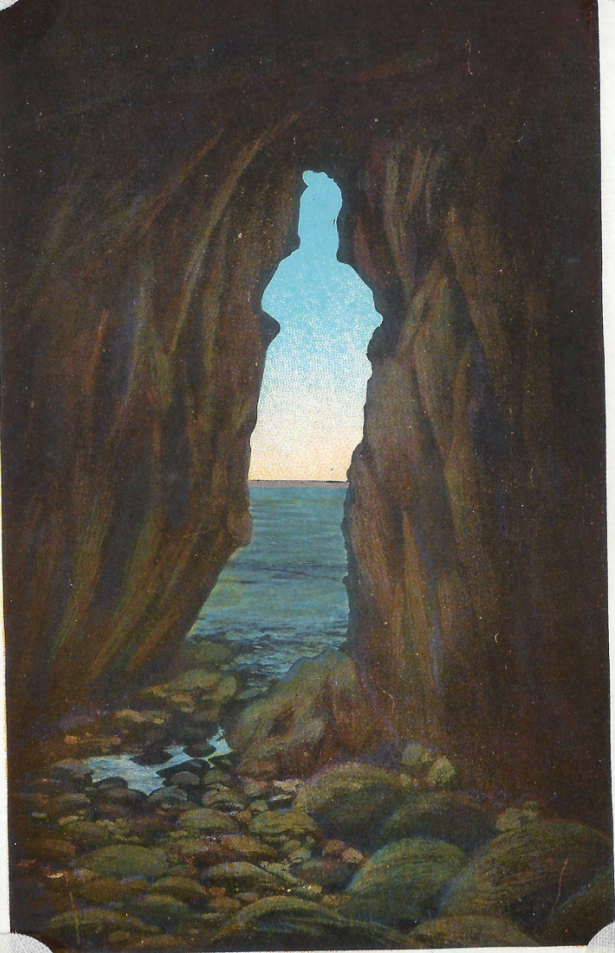


2





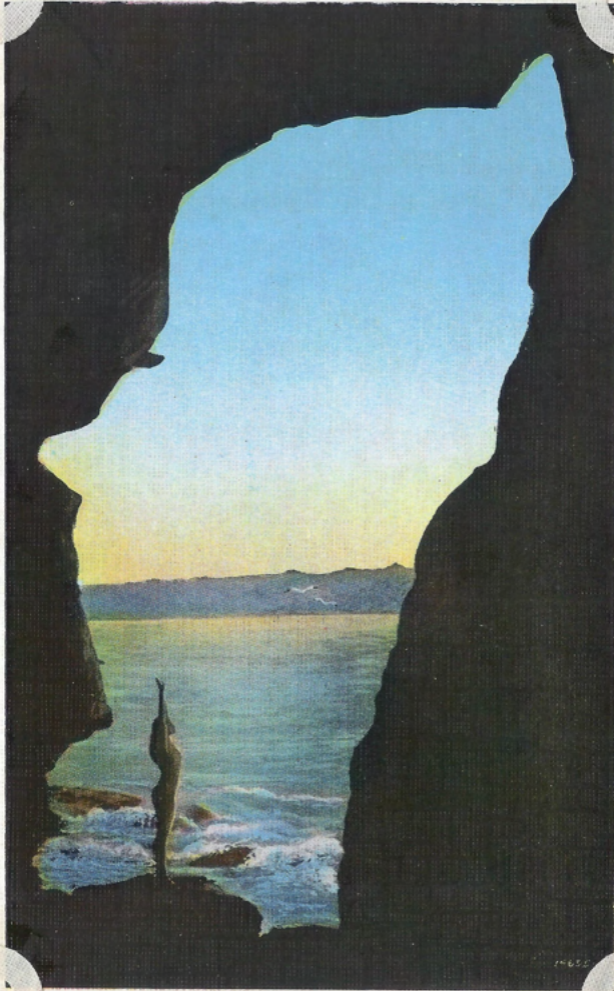
4608 THE WHITE LADY, LA JOLLA, SAN DIEGO, CALIF.



A-

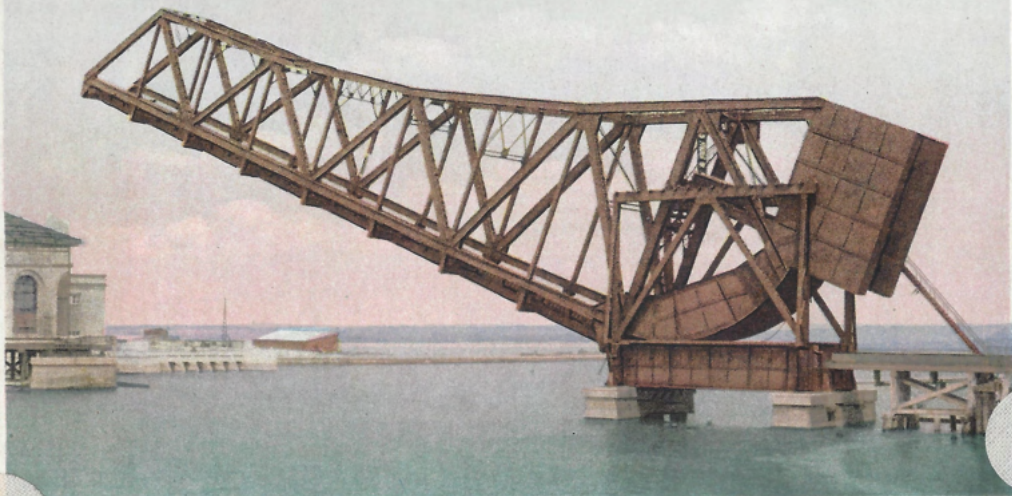
4610 CATHEDRAL ROCKS, LA JOLLA, SAN DIEGO, CALIFORNIA





1-652





BASCULE BRIDGE. BETWEEN LONG BEACH AND SAN PEDRO, CALIFORNIA ONE OF THE LONGEST STRUCTURES OF ITS KIND

4575 U. S. GRANT HOTEL AND PLAZA, SAN DIEGO, CALIFORNIA



33:—Balanced Rock Park, on the San Diego and Arizona Railway.

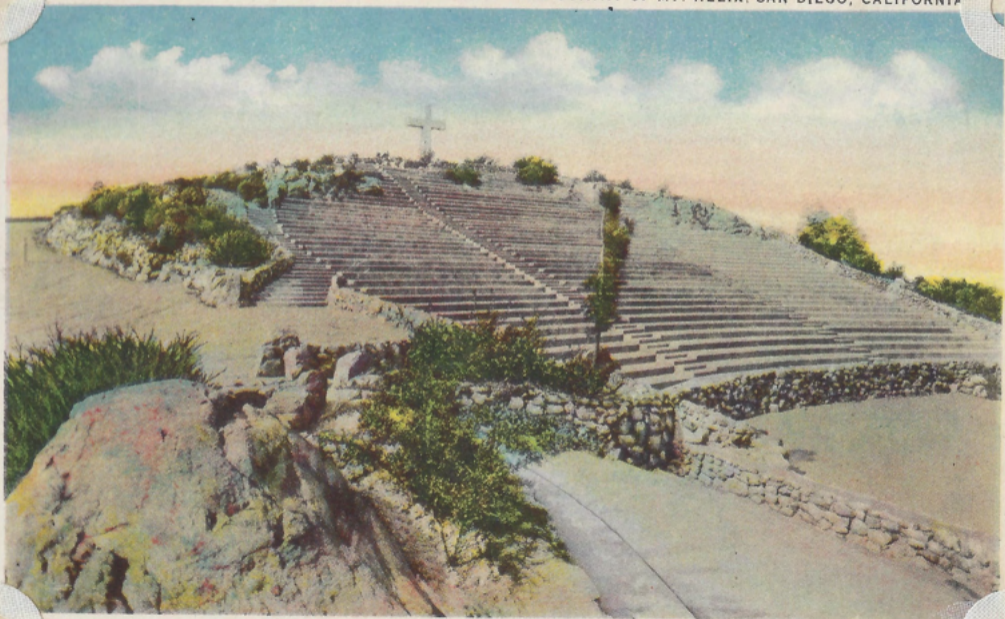




23409

SAN DIEGO, CALIF.

4512 THE SUMMIT OF MT. HELIX, SAN DIEGO, CALIFORNIA





29:—SAN DIEGO ATHLETIC CLUB,
6TH AND A STREETS.



SAN DIEGO

10:—NEW SPRECKLES BLDG., SAN DIEGO, CALIF.

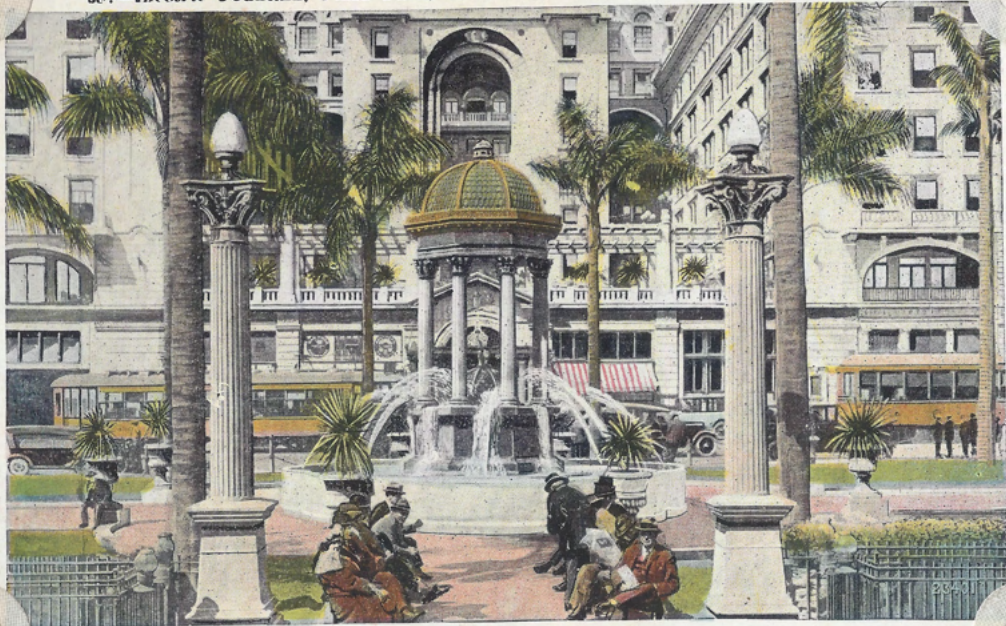


SAN DIEGO TRUST AND SAVINGS BUILDING
6TH AND BROADWAY.

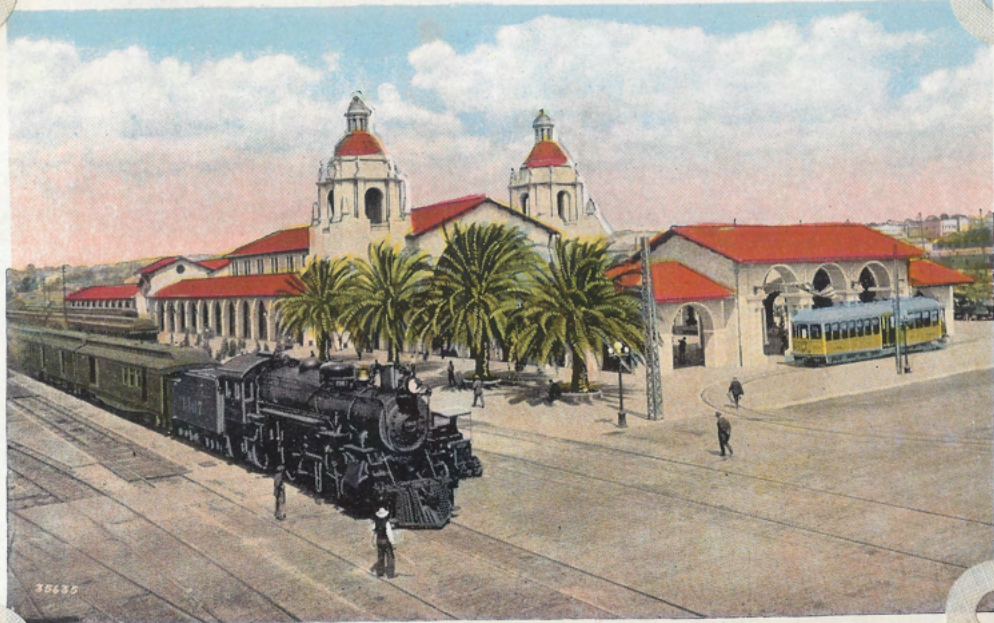


O, LIF.

38:—Electric Fountain, Plaza Park, U. S. Grant Hotel in background, San Diego, Calif.



8:—Union Depot, San Diego, Cal.







*If You Don't Come
to*

California

*The Laugh Will Be
on You*